



**Price**  
**£225,000**

**Leasehold**

1x  1x  1x 

**Northdown, Stockbury,  
Sittingbourne, Kent,  
ME9**

**OVER 60?**

Secure this property  
for up to **59% less!**

*Wards*  
Helping you move forwards





## Main features

- A spacious and smartly presented property that offers excellent value for money
- Cosy lounge and bright airy conservatory
- Stunning established rear garden
- Popular village location
- A rare purchase opportunity

## Accommodation

### GROUND FLOOR

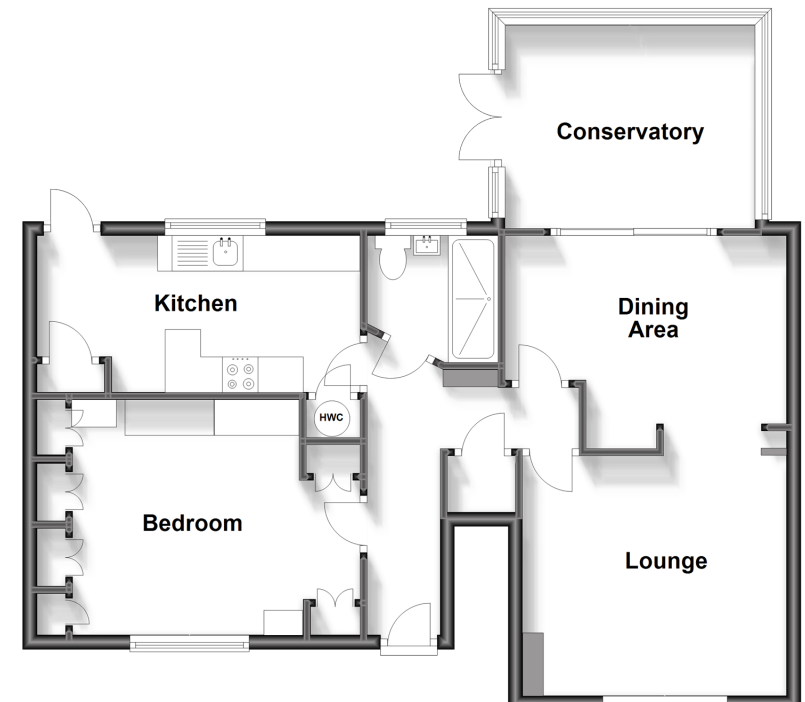
Entrance Hall  
 Bedroom : 12'8 x 10'7 (3.86m x 3.23m)  
 Shower Room  
 Kitchen: 15'1 x 7'4 (4.60m x 2.24m)  
 Dining Area: 12'6 x 9'2 (3.81m x 2.80m)  
 Conservatory : 11'2 x 9'5 (3.41m x 2.87m)  
 Lounge : 12'4 x 10'6 (3.76m x 3.20m)

### OUTSIDE

Front Garden  
 Rear Garden

### Ground Floor

Approx. 70.6 sq. metres (760.1 sq. feet)



**Call Rainham - 01634 373531 ■ wardsofkent.co.uk**

■ Legal advice should be taken to verify fixtures/fittings, planning, alterations and/or lease details  
 ■ Through a Homewise Home For Life Plan people aged 60+ can secure this property for up to 59% less, by purchasing a Lifetime Lease.

■ Appliances & services are untested, dimensions are approximate and floor plans are not to scale



11338088/20230703/CW/DW