



Price
£380,000

Freehold

3x  1x  1x 

**Hickory Dell,
Hempstead, Gillingham,
Kent, ME7**

OVER 60?

Secure this property
for up to **59% less!**

Wards
Helping you move forwards



Main features

- A smartly presented property that would make a great family home
- 13ft lounge and open plan dining area
- Low maintenance rear garden
- Popular Hempstead location
- Close to schools and shops

Accommodation

GROUND FLOOR

Entrance Hall

Lounge : 13'6 x 12'2 (4.12m x 3.71m)

Dining Area : 10'9 x 7'9 (3.28m x 2.36m)

Kitchen : 10'9 x 7'5 (3.28m x 2.26m)

FIRST FLOOR

Landing

Bedroom 1 : 15'7 into recess x 8'7 (4.75m x 2.62m)

Bedroom 2 : 9'1 x 9'0 (2.77m x 2.75m)

Bedroom 3 : 10'1 x 6'4 (3.08m x 1.93m)

Bathroom

OUTSIDE

Front Garden

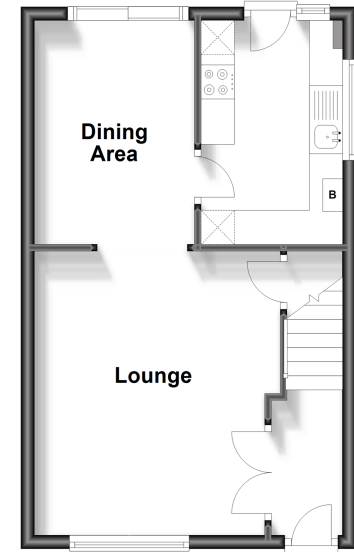
Rear Garden

Garage : 18'1 x 7'8 (5.52m x 2.34m)

Driveway

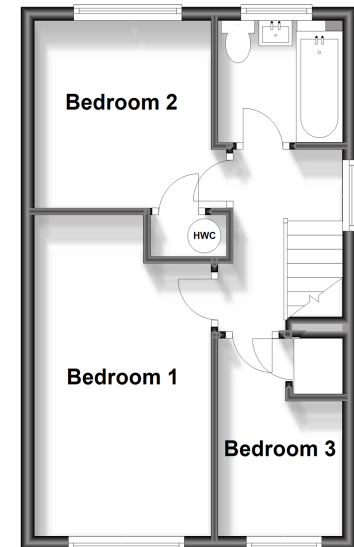
Ground Floor

Approx. 35.1 sq. metres (377.8 sq. feet)



First Floor

Approx. 35.1 sq. metres (377.8 sq. feet)



Call Rainham - 01634 373531 ■ wardsofkent.co.uk

- Legal advice should be taken to verify fixtures/fittings, planning, alterations and/or lease details
- Appliances & services are untested, dimensions are approximate and floor plans are not to scale
- Through a Homewise Home For Life Plan people aged 60+ can secure this property for up to 59% less, by purchasing a Lifetime Lease.



11338089/20230803/CW/DW