



Price
£450,000

Freehold

4x  1x  2x 

**Wickham Close,
Newington,
Sittingbourne, Kent,
ME9**

OVER 60?

Secure this property
for up to **59% less!**

Wards
Helping you move forwards



Main features

- Well presented family home
- Spacious lounge/diner perfect for entertaining
- Being sold as chain free
- Generous sized rear garden and ample parking on the driveway
- Situated in a popular village location close to the amenities and transport links

Accommodation

GROUND FLOOR

Entrance Hall
Downstairs Cloakroom
Kitchen: 11'1 x 10'9 (3.38m x 3.28m)
Breakfast Room: 10'8 x 8'10 (3.25m x 2.69m)
Lounge/Diner: 24'10 x 12'2 (7.57m x 3.71m)

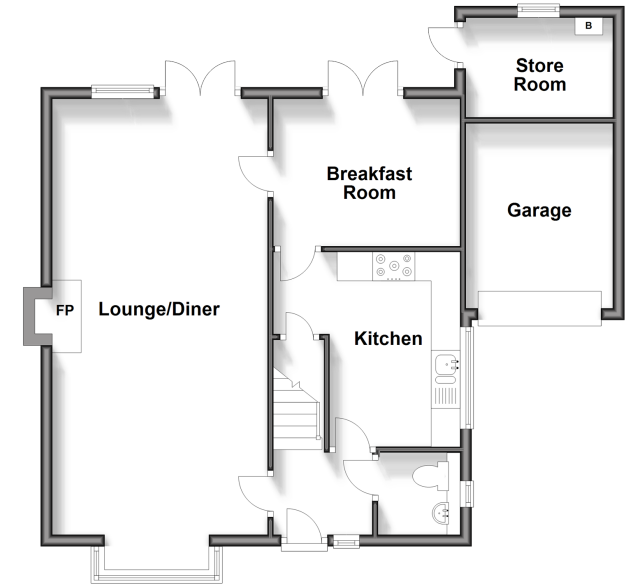
FIRST FLOOR

Bedroom 1 : 12'9 x 9'4 (3.89m x 2.85m)
Bedroom 2 : 11'7 x 9'5 (3.53m x 2.87m)
Bedroom 3: 10'8 x 8'7 (3.25m x 2.62m)
Bedroom 4 : 7'7 x 6'6 (2.31m x 1.98m)
Bathroom

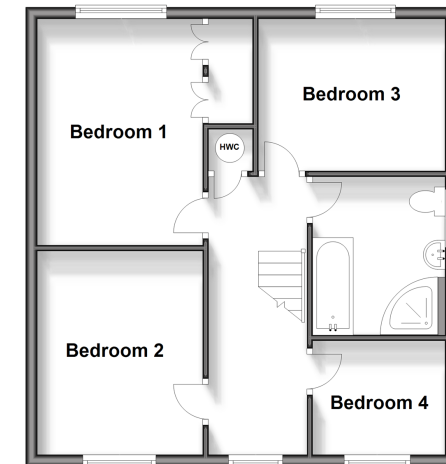
OUTSIDE

Front Garden
Rear Garden
Driveway
Garage
Store Room

Ground Floor
Approx. 66.5 sq. metres (715.8 sq. feet)



First Floor
Approx. 52.9 sq. metres (569.2 sq. feet)



Call Rainham - 01634 373531 ■ wardsofkent.co.uk

- Legal advice should be taken to verify fixtures/fittings, planning, alterations and/or lease details
- Appliances & services are untested, dimensions are approximate and floor plans are not to scale
- Through a Homewise Home For Life Plan people aged 60+ can secure this property for up to 59% less, by purchasing a Lifetime Lease.



11338177/20240423/NJ/NJ