

OVER 60?

Secure this property
for up to **59% less!**



Price
£335,000
Freehold

3x  1x  1x 

Whitegate Court, Parkwood, Gillingham,
Kent, ME8

Wards
Helping you move forwards



Main features

- A deceptive property that would be perfect if you are looking to down size
- Spacious 17ft lounge/diner and useful re-fitted wet room
- Low maintenance rear garden
- Useful garage en-bloc
- Close to shops and bus stops
- No forward chain

Accommodation

GROUND FLOOR

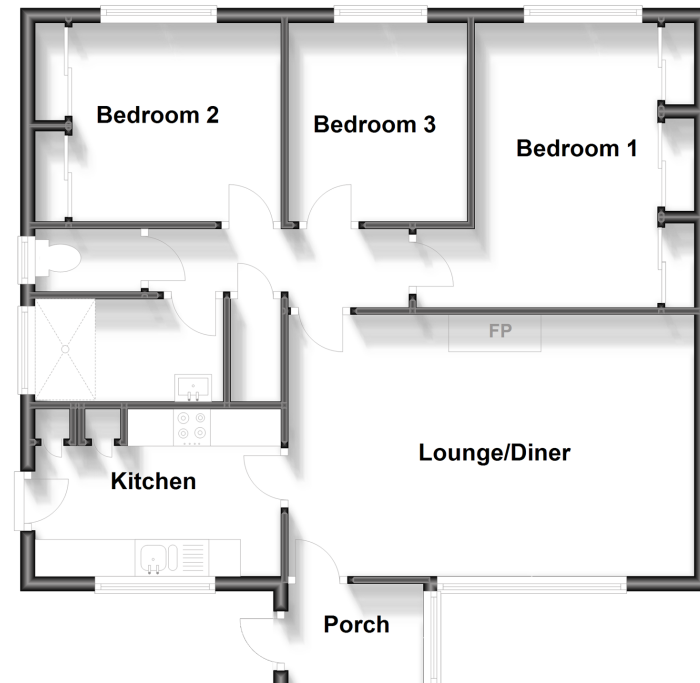
Porch
 Lounge/Diner: 17'9 x 11'9 (5.41m x 3.58m)
 Bedroom 1: 12'5 x 7'9 (3.79m x 2.36m)
 Bedroom 2: 9'0 x 8'9 (2.75m x 2.67m)
 Bedroom 3: 8'8 x 7'6 (2.64m x 2.29m)
 Inner Hallway
 Separate Toilet
 Wet Room
 Kitchen: 10'8 x 7'3 (3.25m x 2.21m)

OUTSIDE

Front Garden
 Rear Garden
 Garage En-Bloc

Ground Floor

Approx. 69.7 sq. metres (750.0 sq. feet)



Call Rainham - 01634 373531 ■ wardsofkent.co.uk

■ Legal advice should be taken to verify fixtures/fittings, planning, alterations and/or lease details
 ■ Through a Homewise Home For Life Plan people aged 60+ can secure this property for up to 59% less, by purchasing a Lifetime Lease.

■ Appliances & services are untested, dimensions are approximate and floor plans are not to scale



11338191/20231003/CW/DW