



OVER 60?

Secure this property
for up to **59% less!**

Price
£300,000

Freehold

2x  1x  2x 

**Almond Grove,
Hempstead, Gillingham,
Kent, ME7**

Wards
Helping you move forwards



Main features

- A spacious and extended property that would make a perfect first purchase
- Generous 16ft lounge and open plan kitchen and dining area
- Modern bathroom suite
- Low maintenance rear garden
- Useful garage en-bloc
- Popular Hempstead location

Accommodation

GROUND FLOOR

Porch

Lounge: 16'4 x 11'9 (4.98m x 3.58m)

Kitchen: 11'8 x 8'1 (3.56m x 2.47m)

Dining Area : 9'5 x 8'0 8 (2.87m x 2.44m)

FIRST FLOOR

Landing

Bedroom 1 : 11'9 x 10'8 (3.58m x 3.25m)

Bedroom 2 : 11'9 x 8'1 (3.58m x 2.47m)

Bathroom

OUTSIDE

Front Garden

Rear Garden

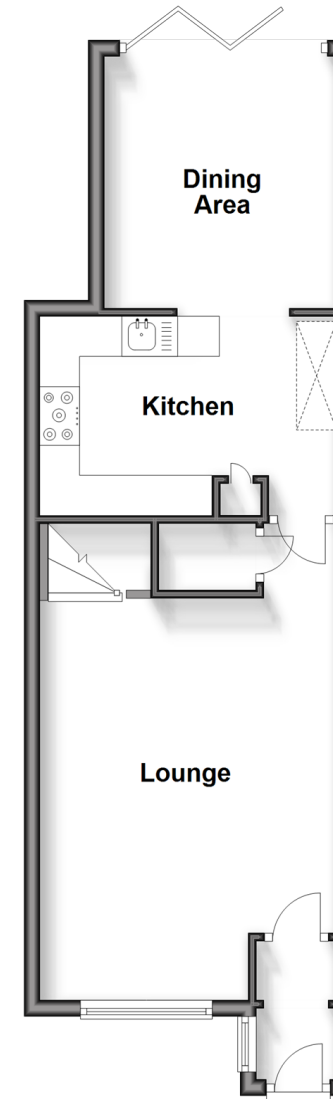
Garage En-Bloc

Call Rainham - 01634 373531 ■ wardsofkent.co.uk

- Legal advice should be taken to verify fixtures/fittings, planning, alterations and/or lease details
- Appliances & services are untested, dimensions are approximate and floor plans are not to scale
- Through a Homewise Home For Life Plan people aged 60+ can secure this property for up to 59% less, by purchasing a Lifetime Lease.

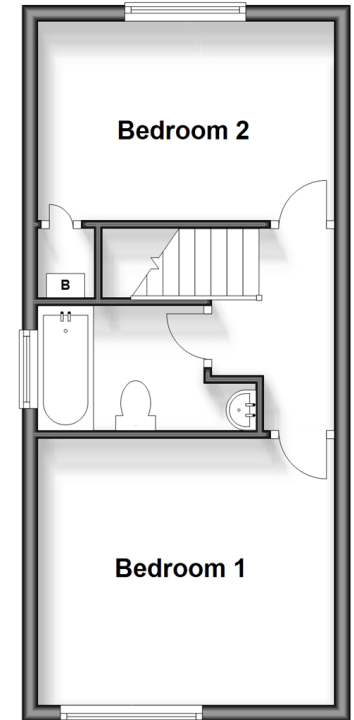
Ground Floor

Approx. 42.1 sq. metres (453.0 sq. feet)



First Floor

Approx. 31.7 sq. metres (340.8 sq. feet)



11338227/20240201/DW/DW