



Price

£524,995

Freehold

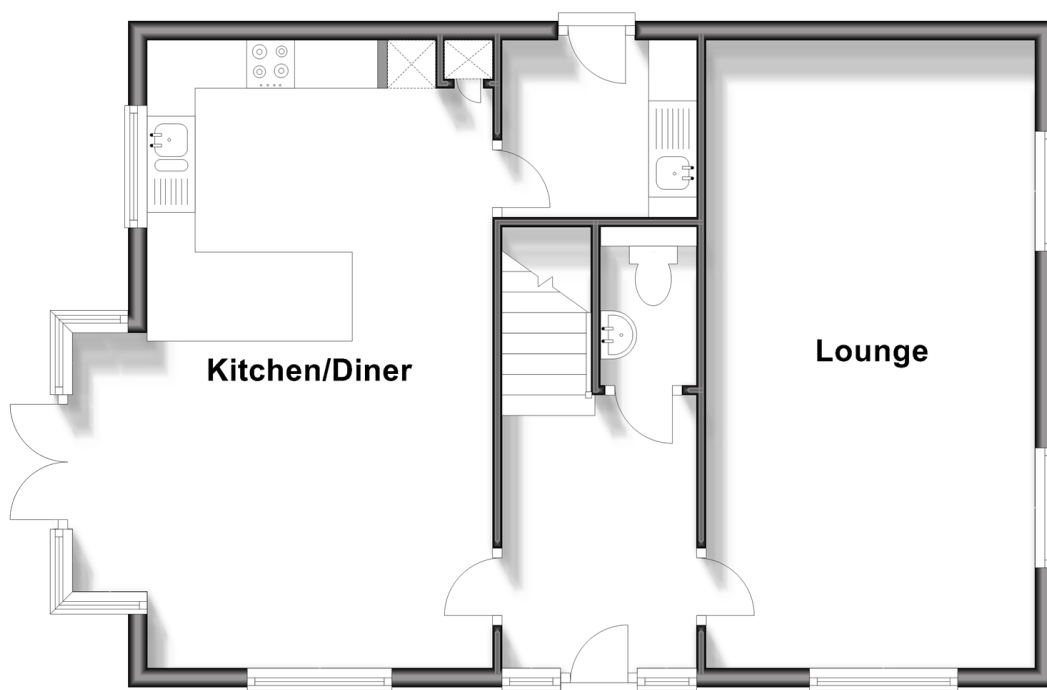
4x  2x  1x 

Kingfisher Green, Lower Rainham Road,
Rainham, Kent, ME8

Wards
Helping you move forwards

Ground Floor

Approx. 62.6 sq. metres (673.3 sq. feet)



First Floor

Approx. 60.5 sq. metres (650.8 sq. feet)



Accommodation

GROUND FLOOR

Entrance Hall
Downstairs Cloakroom
Lounge: 21'4 x 11'3 (6.51m x 3.43m)
Kitchen/Diner: 21'7 x 14'5 (6.58m x 4.40m)
Utility Room: 6'6 x 6'1 (1.98m x 1.86m)

FIRST FLOOR

Landing
Bedroom 1 : 12'0 x 11'4 (3.66m x 3.46m)
En-Suite Shower Room
Bedroom 2 : 11'5 x 10'7 (3.48m x 3.23m)
Bedroom 3 : 11'5 x 10'5 (3.48m x 3.18m)
Bedroom 4: 9'6 x 8'4 (2.90m x 2.54m)
Bathroom

OUTSIDE

Front Garden
Rear Garden
Garage
Driveway



Main features

- An attractive and spacious newly built property perfect as a long term home
- Generous 21ft lounge and open plan kitchen/diner
- Useful utility room
- Sought after development
- A must to view!!



Nearest Schools

Primary Schools: Riverside Primary, St Margaret's CofE Voluntary Controlled Junior School, Rainham, Holywell Primary
Secondary Schools: Leigh Academy Rainham, Rainham Mark Grammar School, Rainham School for Girls



Transport Information

Train Stations: Rainham 0.8 miles, Newington 3.4 miles, Gillingham 3.7 miles



Address

Kingfisher Green, Lower Rainham Road, Rainham, Kent, ME8



Directions

For directions to this property please contact us.



Wards
Helping you move forwards

Call Rainham Branch 01634 373531 ■ wardsofkent.co.uk



■ If buying to let, the energy rating will need to be improved to at least 'E' rating before you can let the property
■ Appliances & services are untested, dimensions are approximate and floor plans are not to scale

■ Legal advice should be taken to verify fixtures/fittings, planning, alterations and/or lease details

11338252/20231116/CW/DW