



**Price**  
**£425,000**

**Freehold**

3x  1x  2x 

**Lombardy Close,  
Hempstead, Gillingham,  
Kent, ME7**

**OVER 60?**

Secure this property  
for up to **59% less!**

*Wards*  
Helping you move forwards



## Main features

- A well presented family home that offers excellent value for money
- Spacious lounge and open plan kitchen/diner
- Sun room and useful utility room
- Downstairs cloakroom
- Sought after Hempstead location
- Close to shops and schools

## Accommodation

### GROUND FLOOR

Entrance Hall

Downstairs Cloakroom

Lounge : 15'8 x 11'1 (4.78m x 3.38m)

Kitchen/Diner : 17'4 x 9'7 (5.29m x 2.92m)

Sun Room : 17'3 x 9'9 (5.26m x 2.97m)

Utility Room: 9'3 x 7'3 (2.82m x 2.21m)

### FIRST FLOOR

Landing

Bedroom 1 : 10'9 x 9'7 (3.28m x 2.92m)

Bedroom 2 : 9'8 x 8'9 (2.95m x 2.67m)

Bedroom 3: 8'4 x 7'4 (2.54m x 2.24m)

Bathroom

### OUTSIDE

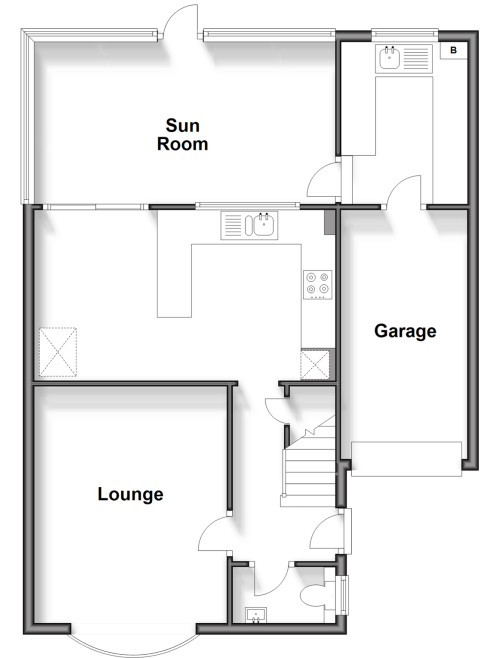
Front Garden

Rear Garden

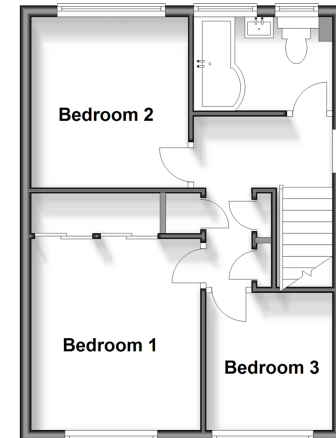
Garage : 14'3 x 8'2 (4.35m x 2.49m)

Driveway

**Ground Floor**  
Approx. 70.8 sq. metres (762.3 sq. feet)



**First Floor**  
Approx. 38.6 sq. metres (415.7 sq. feet)



**Call Rainham - 01634 373531 ■ [wardsofkent.co.uk](http://wardsofkent.co.uk)**

- Legal advice should be taken to verify fixtures/fittings, planning, alterations and/or lease details
- Appliances & services are untested, dimensions are approximate and floor plans are not to scale
- Through a Homewise Home For Life Plan people aged 60+ can secure this property for up to 59% less, by purchasing a Lifetime Lease.



11338276/20240205/CW/DW