



**Price**

**£451,950**

**Leasehold**

2x  2x  1x 

**Plot 8, Bond Lodge,  
High Street, Rainham,  
Gillingham, Kent, ME8**

*Wards*  
Helping you move forwards



## Main features

- A generous sized ground floor apartment that is perfect for downsizing and retirement
- Spacious 19ft lounge/diner and stylish modern kitchen
- High specification throughout
- Communal garden and social areas
- Close to shops and railway station

## Accommodation

### GROUND FLOOR

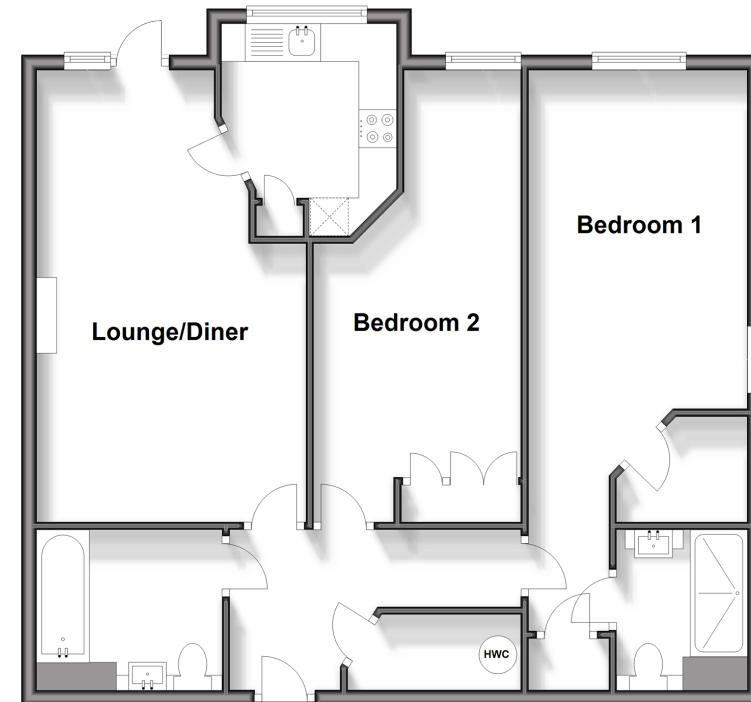
Communal Hall  
Entrance Hall  
Lounge/Diner : 19'6 x 11'8 (5.95m x 3.56m)  
Kitchen: 9'3 x 7'6 (2.82m x 2.29m)  
Bedroom 1 : 20'3 x 10'8 (6.18m x 3.25m)  
En-Suite Shower Room  
Walk-in-Wardrobe  
Bedroom 2 : 17'8 x 8'9 (5.39m x 2.67m)  
Bathroom: 8'0 x 6'7 (2.44m x 2.01m)

### OUTSIDE

Communal Garden  
Communal Parking

### Ground Floor

Approx. 78.6 sq. metres (845.7 sq. feet)



**Call Rainham - 01634 373531 ■ [wardsofkent.co.uk](http://wardsofkent.co.uk)**

■ Legal advice should be taken to verify fixtures/fittings, planning, alterations and/or lease details

■ Appliances & services are untested, dimensions are approximate and floor plans are not to scale



11338288/20240103/CW/DW