



Price

£331,950

Leasehold

1x  1x  1x 

**Plot 21, Bond Lodge,
High Street, Rainham,
Gillingham, Kent, ME8**

Wards
Helping you move forwards



Main features

- A generous sized second floor apartment that is perfect for downsizing and retirement
- Spacious 17ft lounge/diner and stylish modern kitchen
- High specification throughout
- Communal garden and social areas
- Close to shops and railway station

Accommodation

SECOND FLOOR

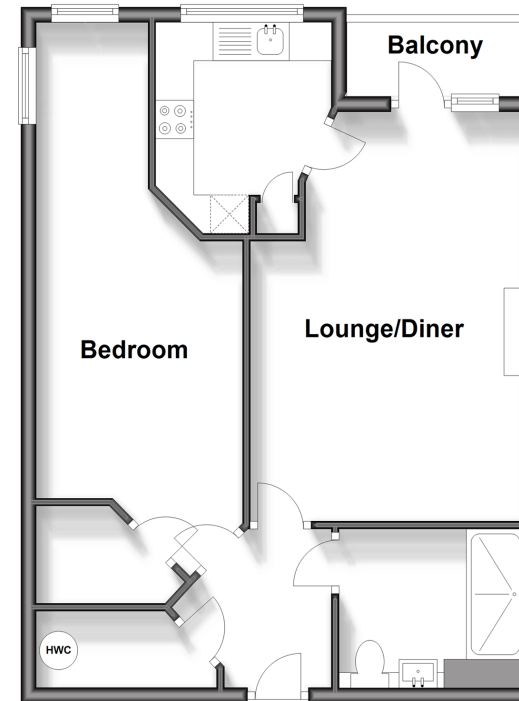
Entrance Hall
 Bedroom : 23'8 x 9'1 (7.22m x 2.77m)
 Walk-in-Wardrobe
 Lounge/Diner : 17'9 x 11'7 (5.41m x 3.53m)
 Balcony
 Shower Room
 Kitchen: 9'1 x 7'8 (2.77m x 2.34m)

OUTSIDE

Communal Garden
 Communal Parking

Second Floor

Approx. 52.7 sq. metres (566.8 sq. feet)



Call Rainham - 01634 373531 ■ wardsofkent.co.uk

■ Legal advice should be taken to verify fixtures/fittings, planning, alterations and/or lease details

■ Appliances & services are untested, dimensions are approximate and floor plans are not to scale



11338289/20240103/CW/DW