



**OVER 60?**

Secure this property  
for up to **59% less!**

**Price**

**£425,000**

**Freehold**

4x  2x  1x 

**Silverspot Close,  
Rainham, Gillingham,  
Kent, ME8**

*Wards*  
Helping you move forwards





## Main features

- A deceptive and vastly extended property
- Generous 22ft lounge and impressive open plan kitchen, family area and dining area
- Useful downstairs cloakroom and utility area
- Established corner plot garden
- Popular central location

## Accommodation

### GROUND FLOOR

Porch  
 Entrance Hall  
 Lounge: 22'8 x 11'3 (6.91m x 3.43m)  
 Utility Area  
 Downstairs Cloakroom  
 Kitchen: 15'9 x 12'3 (4.80m x 3.74m)  
 Family Area : 19'1 x 10'1 (5.82m x 3.08m)  
 Dining Area: 12'3 x 10'10 (3.74m x 3.30m)

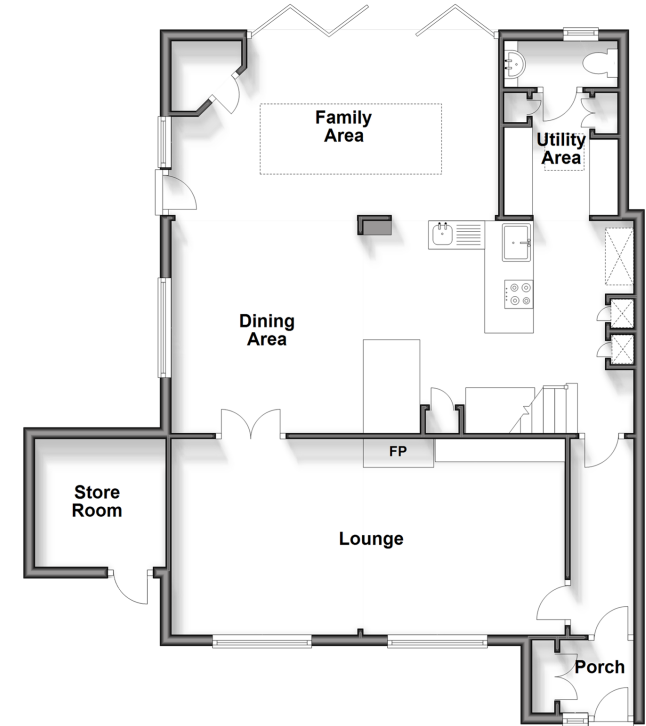
### FIRST FLOOR

Landing  
 Bedroom 1 : 18'0 x 9'8 (5.49m x 2.95m)  
 En-Suite Shower Room  
 Bedroom 2 : 11'5 x 9'0 (3.48m x 2.75m)  
 Bedroom 3 : 8'7 x 8'5 (2.62m x 2.57m)  
 Bedroom 4 : 8'2 x 6'6 (2.49m x 1.98m)  
 Bathroom

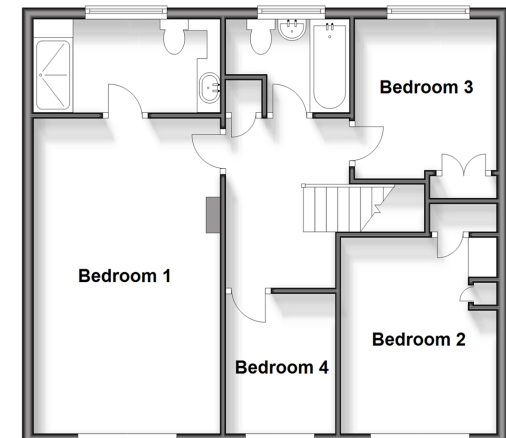
### OUTSIDE

Front Garden  
 Rear Garden  
 Parking Space En-Bloc  
 Store Room

**Ground Floor**  
 Approx. 87.4 sq. metres (940.4 sq. feet)



**First Floor**  
 Approx. 59.8 sq. metres (643.6 sq. feet)



**Call Rainham - 01634 373531 ■ [wardsofkent.co.uk](http://wardsofkent.co.uk)**

- Legal advice should be taken to verify fixtures/fittings, planning, alterations and/or lease details
- Appliances & services are untested, dimensions are approximate and floor plans are not to scale
- Through a Homewise Home For Life Plan people aged 60+ can secure this property for up to 59% less, by purchasing a Lifetime Lease.



11338300/20240201/CW/DW