

**OVER 60?**

Secure this property  
for up to **59% less!**



**Price**  
**£425,000**  
**Freehold**

4x  2x  2x 

Drewery Drive, Wigmore, Gillingham, Kent,  
ME8

*Wards*  
Helping you move forwards





## Main features

- **Smartly presented and extended family home**
- **Adaptable and flexible accommodation to suit your needs**
- **Open plan kitchen/dining area**
- **Useful downstairs shower room**
- **Sought after Wigmore location**

## Accommodation

### GROUND FLOOR

Porch  
Entrance Hall  
Bedroom 4 : 8'4 x 8'4 (2.54m x 2.54m)  
Shower Room  
Play Room: 11'9 x 9'4 (3.58m x 2.85m)  
Kitchen/Dining Area : 22'6 x 14'1 (6.86m x 4.30m)  
Utility Room: 7'3 x 3'2 (2.21m x 0.97m)  
Lounge Area : 14'9 x 11'5 (4.50m x 3.48m)

### FIRST FLOOR

Landing  
Bedroom 1 : 11'5 x 9'5 (3.48m x 2.87m)  
Bedroom 2 : 10'2 x 9'4 (3.10m x 2.85m)  
Bedroom 3 : 11'7 at widest point x 9'3 (3.53m x 2.82m)  
Bathroom

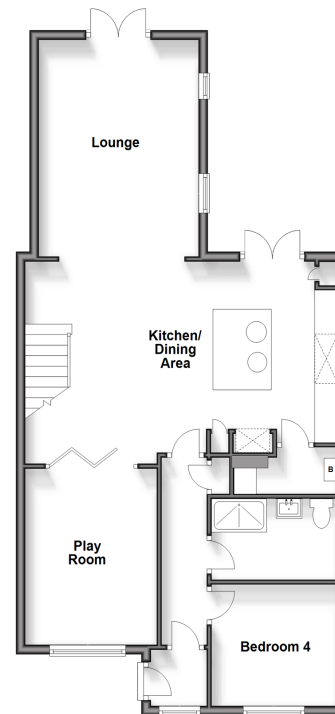
### OUTBUILDING

Room 1/Gym: 15'2 x 7'1 (4.63m x 2.16m)

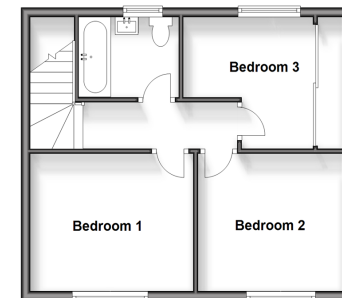
### OUTSIDE

Rear Garden  
Driveway

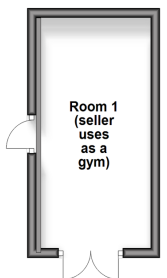
**Ground Floor**  
Approx. 76.5 sq. metres (823.2 sq. feet)



**First Floor**  
Approx. 39.3 sq. metres (423.1 sq. feet)



**Outbuilding**  
Approx. 12.1 sq. metres (130.3 sq. feet)



**Call Rainham - 01634 373531 ■ [wardsofkent.co.uk](http://wardsofkent.co.uk)**

■ Legal advice should be taken to verify fixtures/fittings, planning, alterations and/or lease details  
■ Through a Homewise Home For Life Plan people aged 60+ can secure this property for up to 59% less, by purchasing a Lifetime Lease.

■ Appliances & services are untested, dimensions are approximate and floor plans are not to scale



11338316/20240430/CW/DW