

**OVER 60?**

Secure this property  
for up to **59% less!**



**Price**

**£625,000**

**Freehold**

3x  2x  2x 

Hempstead Road, Hempstead, Gillingham,  
Kent, ME7

**Wards**  
Helping you move forwards

## Accommodation

### GROUND FLOOR

Entrance Hall : 8'7 x 8'1 (2.62m x 2.47m)

Dining Area: 20'7 x 12'3 (6.28m x 3.74m)

Kitchen: 19'7 x 8'7 (5.97m x 2.62m)

Bedroom 3: 10'1 x 8'6 (3.08m x 2.59m)

Bathroom: 9'0 x 7'5 (2.75m x 2.26m)

Lounge : 24'7 x 11'9 (7.50m x 3.58m)

### FIRST FLOOR

Landing

Bedroom 1: 17'7 x 16'4 (5.36m x 4.98m)

En-Suite Shower Room : 9'0 x 4'6 (2.75m x 1.37m)

Bedroom 2: 12'2 x 12'0 (3.71m x 3.66m)

### OUTSIDE

Front Garden

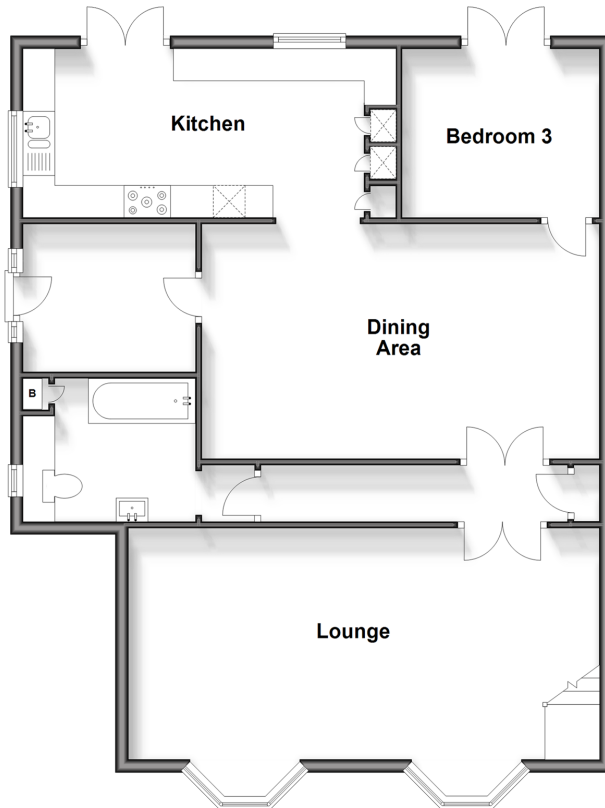
Rear Garden

Workshop/Outbuildings

Driveway

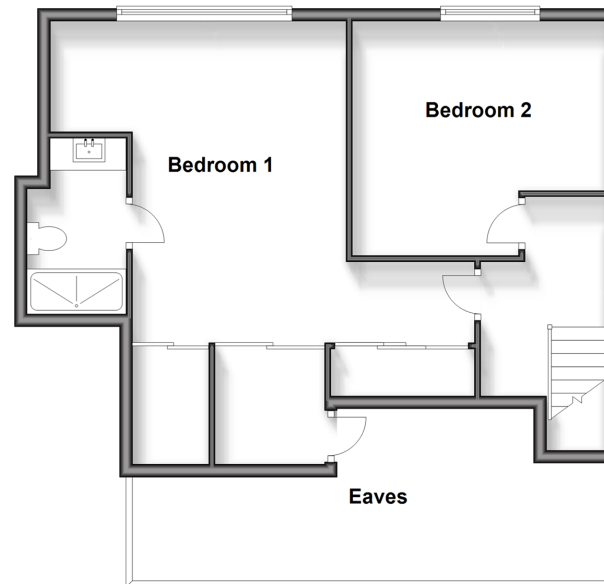
### Ground Floor

Approx. 94.6 sq. metres (1018.0 sq. feet)



### First Floor

Approx. 53.8 sq. metres (579.6 sq. feet)







## Main features

- An attractive and eye catching property that is like a show home inside
- Impressive 24ft lounge and beautiful fitted kitchen
- Stunning and stylish bathroom suite
- Generous private rear garden
- Close to shops and schools
- Sought after Hempstead location



### Nearest Schools

Primary Schools: Hempstead Junior School, Kingfisher Community Primary, Lordswood Junior School  
Secondary Schools: The Robert Napier School, Walderslade Girls' School, Leigh Academy Rainham



### Transport Information

Train Stations: Rainham 3.2 miles, Gillingham 3.4 miles, Chatham 4.3 miles



### Address

Hempstead Road, Hempstead, Gillingham, Kent, ME7



### Directions

For directions to this property please contact us.





**Wards**  
Helping you move forwards

Call Rainham Branch 01634 373531 ■ [wardsofkent.co.uk](http://wardsofkent.co.uk)



■ Legal advice should be taken to verify fixtures/fittings, planning, alterations and/or lease details ■ Appliances & services are untested, dimensions are approximate and floor plans are not to scale  
■ Through a Homewise Home For Life Plan people aged 60+ can secure this property for up to 59% less, by purchasing a Lifetime Lease.



11338332/20240325/CW/DW