



**Price**  
**£300,000**

**Freehold**

3x  1x  2x 

**Maidstone Road,  
Rainham, Gillingham,  
Kent, ME8**

**OVER 60?**

Secure this property  
for up to **59% less!**

*Wards*  
Helping you move forwards





## Main features

- Attractive bay fronted family home
- Generous sized bedrooms
- New and modern shower room
- Low maintenance patio rear garden with allocated parking and garage to the rear
- Situated in a central location close to the local shops, schools and transport links

## Accommodation

### GROUND FLOOR

Entrance Hall

Lounge : 12'0 x 10'0 up to bay (3.66m x 3.05m)

Dining Room: 9'10 x 8'9 (3.00m x 2.67m)

Kitchen: 12'0 x 8'2 (3.66m x 2.49m)

### FIRST FLOOR

Landing

Bedroom 1 : 11'3 x 9'5 up to bay (3.43m x 2.87m)

Bedroom 2 : 10'9 x 10'8 (3.28m x 3.25m)

Bedroom 3 : 8'2 x 7'5 (2.49m x 2.26m)

Shower Room

### OUTSIDE

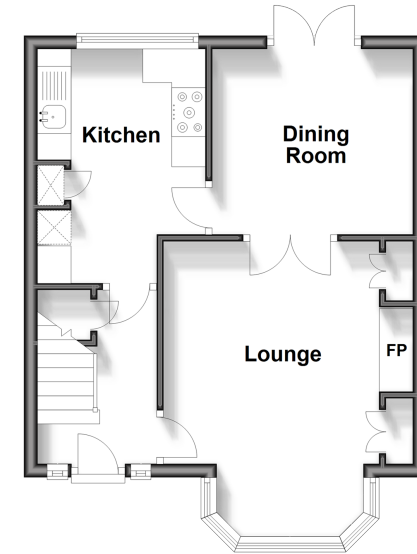
Front Garden

Rear Garden

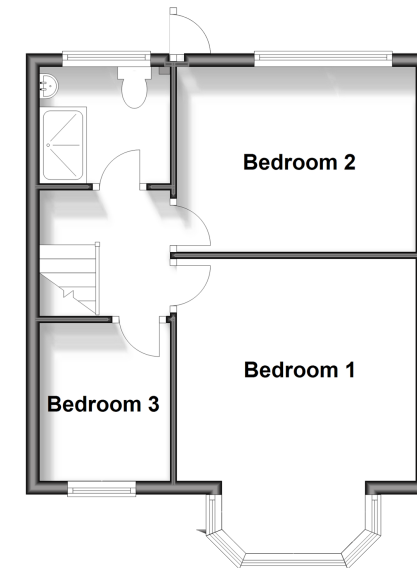
Garage to Rear

Parking to Rear

**Ground Floor**  
Approx. 36.8 sq. metres (395.6 sq. feet)



**First Floor**  
Approx. 36.7 sq. metres (395.0 sq. feet)



**Call Rainham - 01634 373531 ■ [wardsofkent.co.uk](http://wardsofkent.co.uk)**

- Legal advice should be taken to verify fixtures/fittings, planning, alterations and/or lease details
- Appliances & services are untested, dimensions are approximate and floor plans are not to scale
- Through a Homewise Home For Life Plan people aged 60+ can secure this property for up to 59% less, by purchasing a Lifetime Lease.



11338334/20240416/NJ/NJ