



Price
£365,000

Freehold

3x  1x  2x 

**Pembury Way, Rainham,
Gillingham, Kent, ME8**

OVER 60?

Secure this property
for up to **59% less!**

Wards
Helping you move forwards



Main features

- Perfect home for a growing family
- Will be sold as chain-free
- Energy saving solar panels on the roof
- Modern family bathroom and spacious accommodation
- Situated in a central location close to local shops, train station and transport links

Accommodation

GROUND FLOOR

Entrance Hall

Lounge: 15'7 x 11'4 (4.75m x 3.46m)

Dining Room : 13'4 x 7'11 (4.07m x 2.41m)

FIRST FLOOR

Landing

Bedroom 1: 15'9 x 11'5 (4.80m x 3.48m)

Bedroom 2: 10'6 x 8'0 (3.20m x 2.44m)

Bedroom 3: 10'2 x 9'2 (3.10m x 2.80m)

Bathroom

OUTSIDE

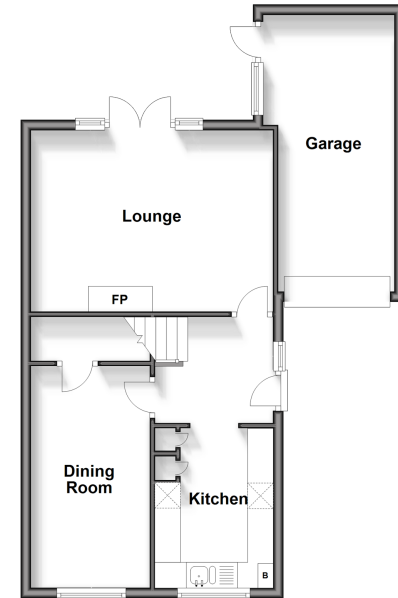
Front Garden

Rear Garden

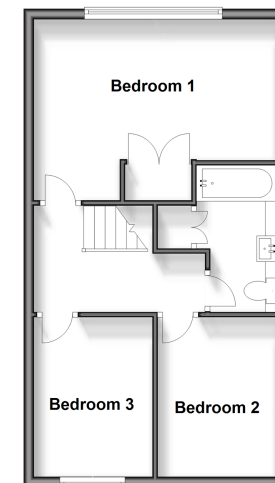
Garage

Driveway

Ground Floor
Approx. 55.6 sq. metres (597.9 sq. feet)



First Floor
Approx. 42.3 sq. metres (455.5 sq. feet)



Call Rainham - 01634 373531 ■ wardsofkent.co.uk

- Legal advice should be taken to verify fixtures/fittings, planning, alterations and/or lease details
- Appliances & services are untested, dimensions are approximate and floor plans are not to scale
- Through a Homewise Home For Life Plan people aged 60+ can secure this property for up to 59% less, by purchasing a Lifetime Lease.



11338346/20240427/NJ/NJ