



OVER 60?

Secure this property
for up to **59% less!**

Price

£280,000

Freehold

3x  1x  1x 

**Ormsby Green,
Parkwood, Gillingham,
Kent, ME8**

Wards
Helping you move forwards



Main features

- Well presented first time buyers home
- Spacious lounge/diner
- Useful garage to the rear of the garden
- Low maintenance garden
- Situated in a central location close to the local shops and amenities

Accommodation

GROUND FLOOR

Entrance Hall

Kitchen/Breakfast Room: 10'9 x 10'1 (3.28m x 3.08m)

Lounge/Diner: 17'2 x 13'2 (5.24m x 4.02m)

FIRST FLOOR

Landing

Bedroom 1: 13'1 x 8'6 (3.99m x 2.59m)

Bedroom 2 : 9'10 x 7'0 (3.00m x 2.14m)

Bedroom 3 : 8'6 x 8'3 (2.59m x 2.52m)

Bathroom

OUTSIDE

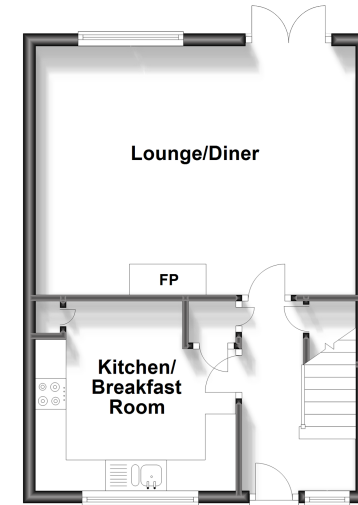
Front Garden

Rear Garden

Garage to Rear

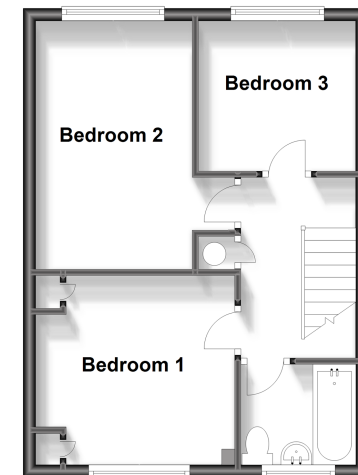
Ground Floor

Approx. 37.6 sq. metres (405.1 sq. feet)



First Floor

Approx. 37.6 sq. metres (405.1 sq. feet)



Call Rainham - 01634 373531 ■ wardsof Kent.co.uk

- The seller is a person connected with Wards as defined in the Estate Agents Act 1979
- Legal advice should be taken to verify fixtures/fittings, planning, alterations and/or lease details
- Appliances & services are untested, dimensions are approximate and floor plans are not to scale
- Through a Homewise Home For Life Plan people aged 60+ can secure this property for up to 59% less, by purchasing a Lifetime Lease.



11338347/20240319/KD/NJ