



Price
£315,000

Freehold

3x  1x  2x 

**Moor Park Close,
Rainham, Gillingham,
Kent, ME8**

OVER 60?

Secure this property
for up to **59% less!**

Wards
Helping you move forwards



Main features

- Perfect home for either a family or first time buyers
- Being sold as chain free
- Located in a cul-de-sac location
- Low maintenance rear garden and generous sized driveway
- Close to the High Street with shops and amenities

Accommodation

GROUND FLOOR

Entrance Hall

Kitchen: 9'8 x 6'11 (2.95m x 2.11m)

Lounge/Diner: 19'0 x 9'5 (5.80m x 2.87m)

Conservatory : 14'11 x 7'5 (4.55m x 2.26m)

FIRST FLOOR

Landing

Bedroom 1 : 11'4 x 11'0 (3.46m x 3.36m)

Bedroom 2 : 9'3 x 8'5 (2.82m x 2.57m)

Bedroom 3 : 10'0 x 9'7 (3.05m x 2.92m)

Shower Room

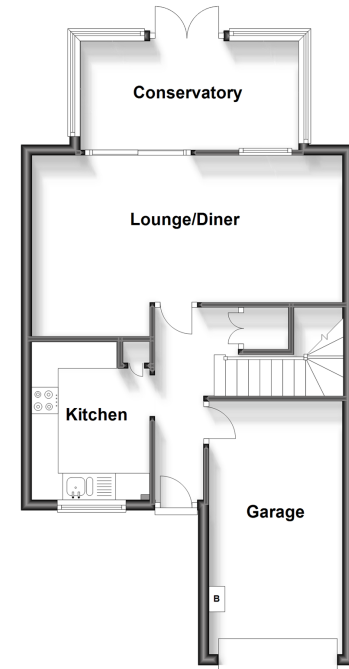
OUTSIDE

Rear Garden

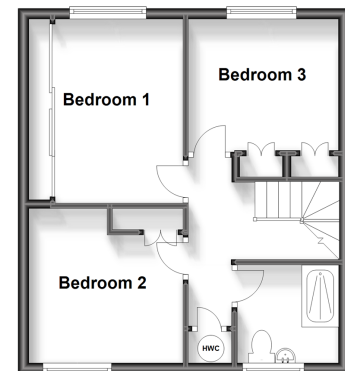
Integral Garage

Driveway

Ground Floor
Approx. 54.3 sq. metres (584.6 sq. feet)



First Floor
Approx. 38.1 sq. metres (410.1 sq. feet)



Call Rainham - 01634 373531 ■ wardsofkent.co.uk

- Legal advice should be taken to verify fixtures/fittings, planning, alterations and/or lease details
- Appliances & services are untested, dimensions are approximate and floor plans are not to scale
- Through a Homewise Home For Life Plan people aged 60+ can secure this property for up to 59% less, by purchasing a Lifetime Lease.



11338356/20240424/NJ/NJ