



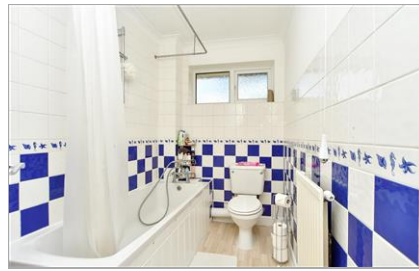
Price
£285,000

Freehold

2x  1x  1x 

**Middleton Close,
Rainham, Gillingham,
Kent, ME8**

Wards
Helping you move forwards



Main features

- A well presented property that would be great for any keen first time buyer
- Spacious 16ft lounge and open plan kitchen/diner
- Low maintenance rear garden
- Useful garage and off road parking
- No forward chain!

Accommodation

GROUND FLOOR

Porch

Lounge: 16'3 x 13'0 (4.96m x 3.97m)

Kitchen/Diner: 13'0 x 10'6 (3.97m x 3.20m)

FIRST FLOOR

Landing

Bedroom 1 : 11'5 x 9'8 (3.48m x 2.95m)

Bedroom 2 : 12'5 x 7'6 (3.79m x 2.29m)

Bathroom

OUTBUILDING

Garage

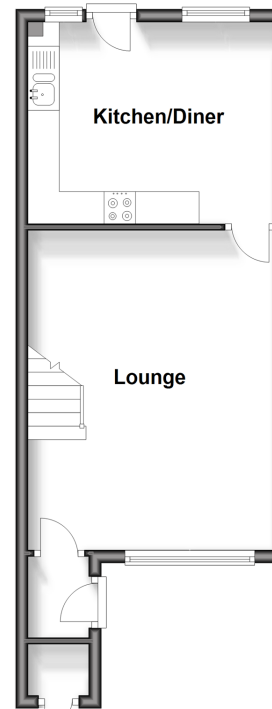
OUTSIDE

Front Garden

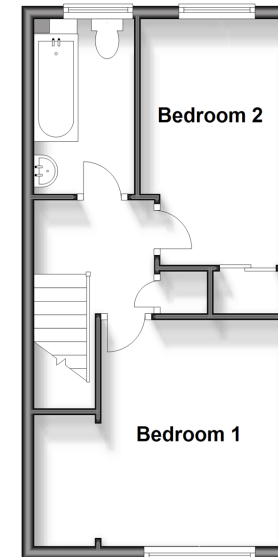
Rear Garden

Off Road Parking

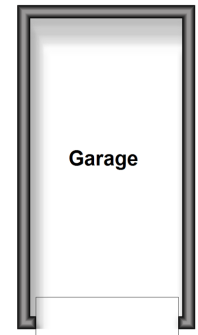
Ground Floor
Approx. 34.6 sq. metres (373.0 sq. feet)



First Floor
Approx. 32.9 sq. metres (354.0 sq. feet)



Outbuilding
Approx. 0.0 sq. metres (0.0 sq. feet)



Call Rainham - 01634 373531 ■ wardsofkent.co.uk

■ Legal advice should be taken to verify fixtures/fittings, planning, alterations and/or lease details

■ Appliances & services are untested, dimensions are approximate and floor plans are not to scale



11338389/20240423/NJ/DW