



OVER 60?

Secure this property
for up to **59% less!**

Price

£290,000

Freehold

2x  1x  1x 

**Shorefields, Rainham,
Gillingham, Kent, ME8**

Wards
Helping you move forwards



Main features

- Well presented property with modern decor throughout
- Perfect first purchase or buy to let investment opportunity
- Good access to Rainham train station
- Low maintenance rear garden
- 2 allocated parking spaces to the rear

Accommodation

GROUND FLOOR

Entrance Hall

Kitchen: 9'10 x 7'5 (3.00m x 2.26m)

Lounge/Diner: 14'2 x 11'9 (4.32m x 3.58m)

FIRST FLOOR

Landing

Bedroom 1 : 11'9 x 8'11 (3.58m x 2.72m)

Bedroom 2 : 9'10 x 9'8 (3.00m x 2.95m)

Bathroom: 6'3 x 5'6 (1.91m x 1.68m)

OUTSIDE

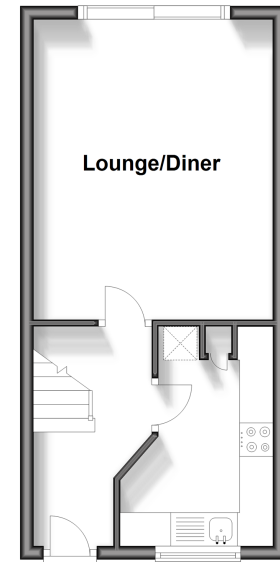
Front Garden

Rear Garden

2 Allocated Parking Spaces

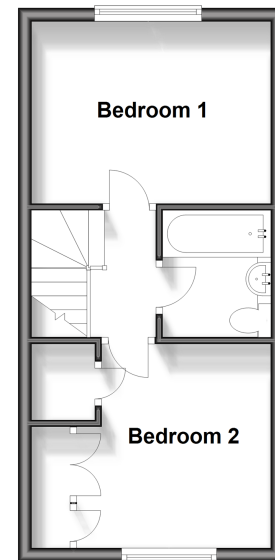
Ground Floor

Approx. 28.3 sq. metres (304.6 sq. feet)



First Floor

Approx. 28.3 sq. metres (304.6 sq. feet)



Call Rainham - 01634 373531 ■ wardsofKent.co.uk

- Legal advice should be taken to verify fixtures/fittings, planning, alterations and/or lease details
- Appliances & services are untested, dimensions are approximate and floor plans are not to scale
- Through a Homewise Home For Life Plan people aged 60+ can secure this property for up to 59% less, by purchasing a Lifetime Lease.



11338422/20240422/CW/KD