



**OVER 60?**

Secure this property  
for up to **59% less!**

**Price**  
**£325,000**

**Freehold**

4x  1x  1x 

**Broadview Avenue,  
Rainham, Gillingham,  
Kent, ME8**

*Wards*  
Helping you move forwards





## Main features

- **Attractive family home**
- **Spacious and flexible accommodation to suit your needs**
- **Benefiting from a garage and driveway**
- **Tidy and well maintained rear garden**
- **Situated in a central location close to the town centre and train station**

## Accommodation

### GROUND FLOOR

Entrance Hall  
Kitchen/Diner: 11'6 x 10'11 (3.51m x 3.33m)

### FIRST FLOOR

Landing  
Bedroom 4: 11'6 x 7'5 (3.51m x 2.26m)  
Lounge: 16'5 x 14'5 (5.01m x 4.40m)  
Bathroom

### SECOND FLOOR

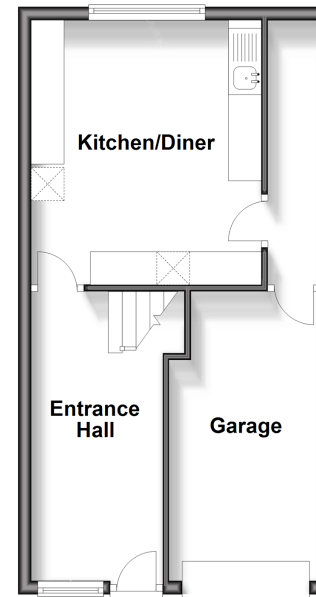
Landing  
Bedroom 1: 14'5 x 10'5 (4.40m x 3.18m)  
Bedroom 2: 14'9 x 8'2 (4.50m x 2.49m)  
Bedroom 3: 11'5 x 6'1 (3.48m x 1.86m)

### OUTSIDE

Front Garden  
Rear Garden  
Driveway  
Garage

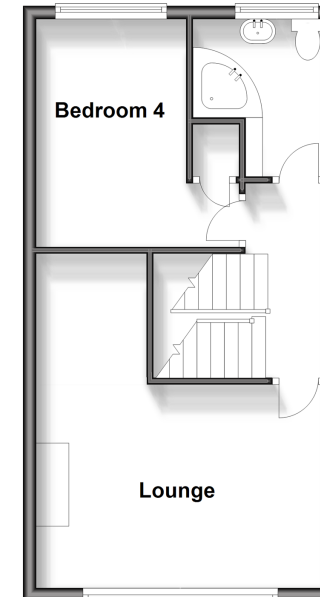
### Ground Floor

Approx. 37.2 sq. metres (400.2 sq. feet)



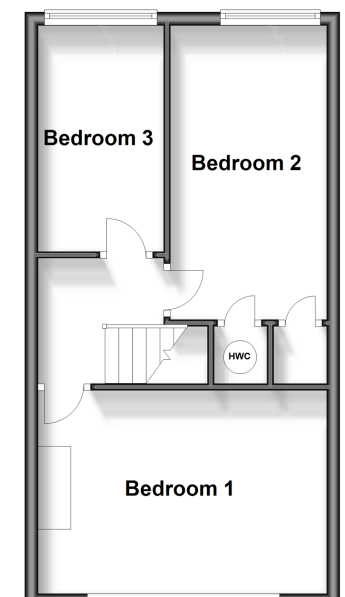
### First Floor

Approx. 37.7 sq. metres (405.5 sq. feet)



### Second Floor

Approx. 37.7 sq. metres (405.5 sq. feet)



**Call Rainham - 01634 373531 ■ [wardsofkent.co.uk](http://wardsofkent.co.uk)**

■ Legal advice should be taken to verify fixtures/fittings, planning, alterations and/or lease details  
■ Through a Homewise Home For Life Plan people aged 60+ can secure this property for up to 59% less, by purchasing a Lifetime Lease.

■ Appliances & services are untested, dimensions are approximate and floor plans are not to scale