



Price
£575,000

Freehold

4x  1x  1x 

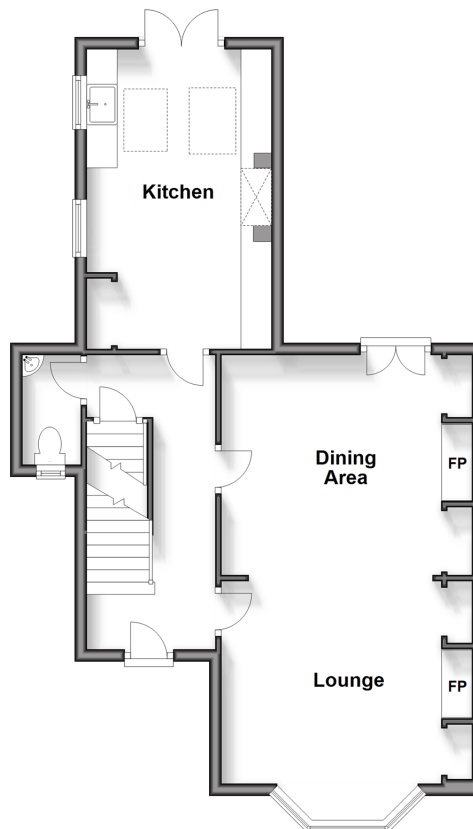
**High Street, Minster,
Ramsgate, Kent, CT12**

OVER 60?

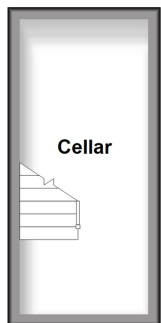
Secure this property
for up to **59% less!**

Wards
Helping you move forwards

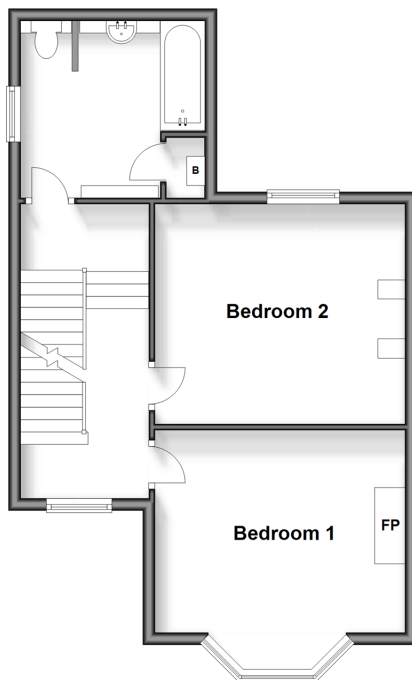
Ground Floor
Approx. 57.0 sq. metres (614.0 sq. feet)



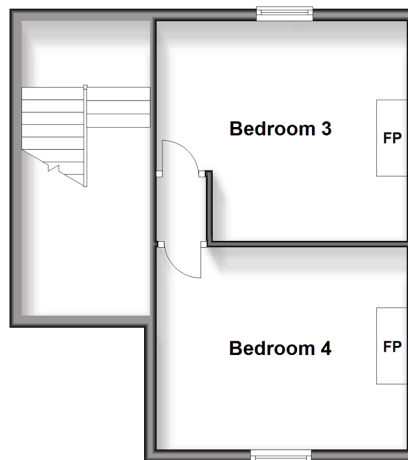
Basement
Approx. 10.2 sq. metres (109.5 sq. feet)



Split Level First Floor
Approx. 49.0 sq. metres (527.8 sq. feet)



Second Floor
Approx. 39.6 sq. metres (426.2 sq. feet)



Accommodation

GROUND FLOOR

Entrance Hallway

Lounge : 12'6 x 10'8 (3.81m x 3.25m)

Dining Area: 12'6 x 11'8 (3.81m x 3.56m)

Cloakroom

Kitchen: 16'1 x 9'8 (4.91m x 2.95m)

BASEMENT

Cellar

SPLIT LEVEL FIRST FLOOR

Landing

Bedroom 1: 13'9 x 13'7 (4.19m x 4.14m)

Bedroom 2: 13'8 x 12'2 (4.17m x 3.71m)

Bathroom

SECOND FLOOR

Landing

Bedroom 3: 13'6 x 12'2 (4.12m x 3.71m)

Bedroom 4: 13'4 x 11'1 (4.07m x 3.38m)

OUTSIDE

Garden to Front and Rear

Off Road Parking



Main features

- Prestigious family home, built in the late 1800's
- Period features throughout, full of character
- Off road parking and a well maintained rear garden
- Spacious lounge and dining area, perfect for entertaining guests
- Located in the popular Minster village, just a short walk from a variety of restaurants, shops and transport links



Nearest Schools

Primary Schools: Minster C of E Primary 0.1 miles, Monkton C of E Primary 1.5 miles, Birchington C of E Primary 2.6 miles
Secondary Schools: King Ethelbert School 3.0 miles, Ursuline College 3.1 miles



Transport Information

Train Stations: Minster 0.2 miles, Birchington-On-Sea 3.0 miles, Westgate-on-Sea 3.4 miles



Address

High Street, Minster, Ramsgate, Kent, CT12



Directions

For directions to this property please contact us.



Wards
Helping you move forwards

Call Ramsgate Branch 01843 580314 ■ wardsofkent.co.uk



- A private rental licensing scheme applies to some properties in this area, please contact us before proceeding
- Appliances & services are untested, dimensions are approximate and floor plans are not to scale

- Legal advice should be taken to verify fixtures/fittings, planning, alterations and/or lease details
- Through a Homewise Home For Life Plan people aged 60+ can secure this property for up to 59% less, by purchasing a Lifetime Lease.



11420324/20231204/DL/JR