



OVER 60?

Secure this property
for up to **59% less!**

Price

£450,000

Freehold

4x  1x  2x 

**Vale Road, Ramsgate,
Kent, CT11**

Wards
Helping you move forwards

Accommodation

SPLIT LEVEL GROUND FLOOR

Entrance Hallway

Bedroom 3 : 14'1 x 13'8 (4.30m x 4.17m)

Bedroom 4: 13'2 x 11'8 (4.02m x 3.56m)

Study: 10'5 x 10'0 (3.18m x 3.05m)

Cloakroom

SPLIT LEVEL LOWER GROUND FLOOR

Kitchen/Diner : 18'4 x 11'5 (5.59m x 3.48m)

Lounge : 13'5 x 10'3 (4.09m x 3.13m)

SPLIT LEVEL FIRST FLOOR

Landing

Dressing Room: 11'4 x 4'4 (3.46m x 1.32m)

Bedroom 1: 14'10 x 11'7 (4.52m x 3.53m)

Bedroom 2: 13'5 x 11'8 (4.09m x 3.56m)

Bathroom

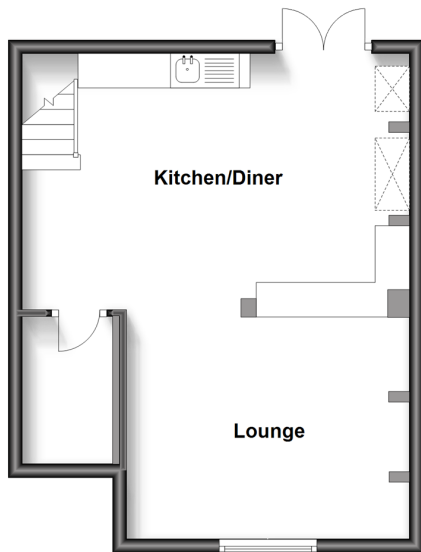
OUTSIDE

Garden to Front

Garden to Rear

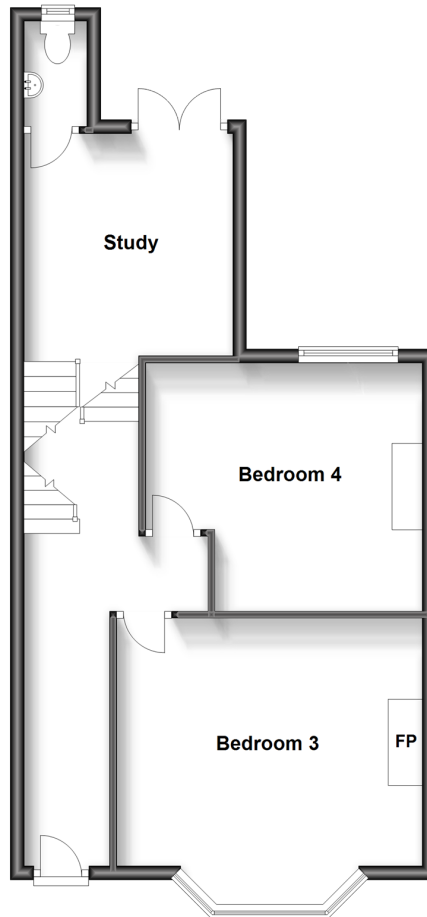
Split Level Lower Ground Floor

Approx. 38.0 sq. metres (409.5 sq. feet)



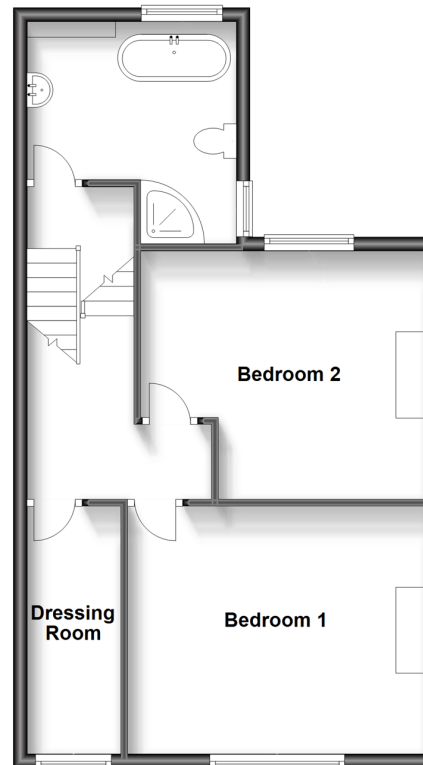
Split Level Ground Floor

Approx. 53.8 sq. metres (579.4 sq. feet)



Split Level First Floor

Approx. 52.5 sq. metres (565.4 sq. feet)





Main features

- Full of character and charm with beautiful original features
- Being sold with no onward chain
- Spacious rooms throughout and arranged over 3 floors; perfect for a growing family
- In a great catchment area for highly rated local schools and transport links



Nearest Schools

Primary Schools: Ramsgate, Christ Church C of E Junior School 0.4 miles, St Laurence in Thanet C of E Junior School 0.7 miles, Newlands Primary 1.0 miles
Secondary Schools: Clarendon and Chatham House Grammar School 0.5 miles, St Lawrence College 1.0 miles



Transport Information

Train Stations: Ramsgate 0.8 miles, Dumpton Park 1.7 miles, Broadstairs 2.9 miles



Address

Vale Road, Ramsgate, Kent, CT11



Directions

For directions to this property please contact us.



Wards
Helping you move forwards

Call Ramsgate Branch 01843 580314 ■ wardsofkent.co.uk



- A private rental licensing scheme applies to some properties in this area, please contact us before proceeding
- Appliances & services are untested, dimensions are approximate and floor plans are not to scale

- Legal advice should be taken to verify fixtures/fittings, planning, alterations and/or lease details
- Through a Homewise Home For Life Plan people aged 60+ can secure this property for up to 59% less, by purchasing a Lifetime Lease.



11423107/20231006/CJ/JR