



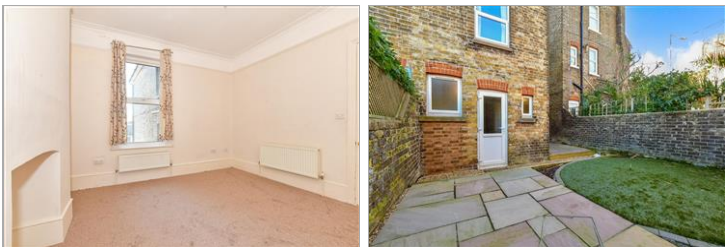
Price
£400,000

Freehold

5x  2x  2x 

**Dumpton Park Drive,
Ramsgate, Kent, CT11**

Wards
Helping you move forwards



Main features

- Being sold with no onward chain
- Private low maintenance rear garden
- Victorian property arranged over 4 floors
- Idyllic family home boasting generous size rooms throughout
- Located in a prestigious area in Ramsgate, just a short distance from the East Cliff

Accommodation

SPLIT LEVEL GROUND FLOOR

Entrance Hallway

Lounge: 15'3 x 14'1 (4.65m x 4.30m)

Dining Room : 12'4 x 12'3 (3.76m x 3.74m)

Kitchen : 14'5 x 9'9 (4.40m x 2.97m)

Cloakroom

BASEMENT

Cellar: 14'3 x 13'1 (4.35m x 3.99m)

SPLIT LEVEL FIRST FLOOR

Landing

Bedroom 1: 18'1 x 15'7 (5.52m x 4.75m)

Bedroom 2 : 12'3 x 12'2 (3.74m x 3.71m)

Bedroom 3 : 12'2 x 10'4 (3.71m x 3.15m)

Shower Room

SPLIT LEVEL SECOND FLOOR

Landing

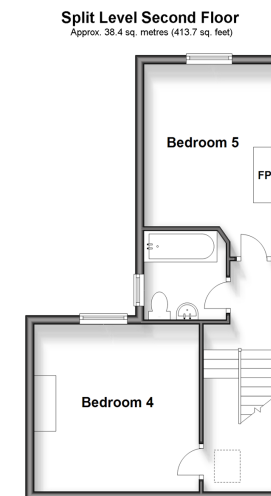
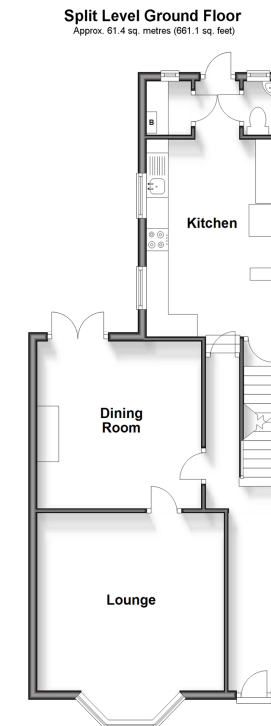
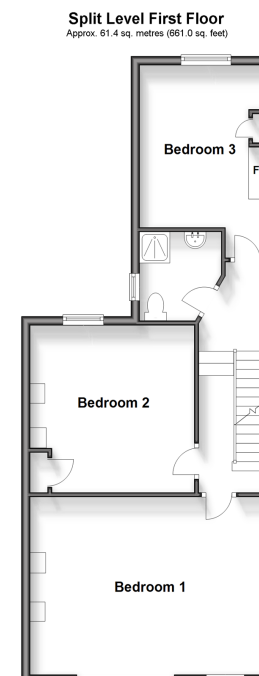
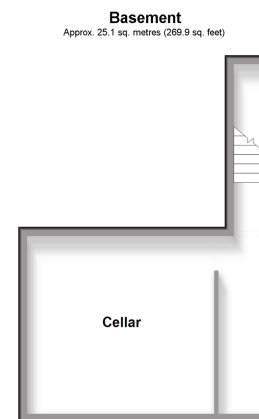
Bedroom 4 : 12'3 x 12'3 (3.74m x 3.74m)

Bedroom 5 : 11'7 x 10'2 (3.53m x 3.10m)

Bathroom

OUTSIDE

Garden to Front and Rear



Call Ramsgate - 01843 580314 ■ wardsof Kent.co.uk

- Japanese Knotweed is present at or close to this property, please contact us before proceeding
- A private rental licensing scheme applies to some properties in this area, please contact us before proceeding
- Legal advice should be taken to verify fixtures/fittings, planning, alterations and/or lease details
- Appliances & services are untested, dimensions are approximate and floor plans are not to scale

