



Price

£265,000

Leasehold

2x  1x  1x 

**South Gateway Court,
Victoria Parade,
Ramsgate CT11**



Video Tour available

Wards
Helping you move forwards



Main features

- Split level third floor maisonette with a balcony to soak up those views
- Located on the edge of the stunning Kent coastline
- Ideal for those looking to down size or retire by the sea
- A lift to all floors offers easy access
- Allocated parking space

Accommodation

THIRD FLOOR

Entrance Hall

Kitchen: 11'7 x 9'8 (3.53m x 2.95m)

Living Room: 15'7 x 13'5 (4.75m x 4.09m)

Balcony

FOURTH FLOOR

Landing

Bedroom 1: 15'6 x 10'11 (4.73m x 3.33m)

Bathroom

Bedroom 2: 11'2 x 7'11 (3.41m x 2.41m)

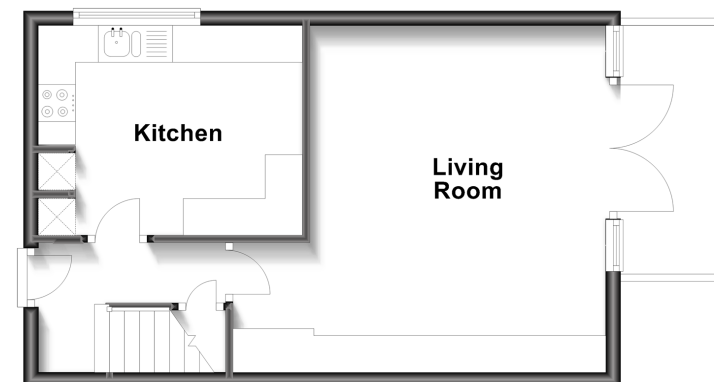
OUTSIDE

Allocated Parking Space

Communal Gardens

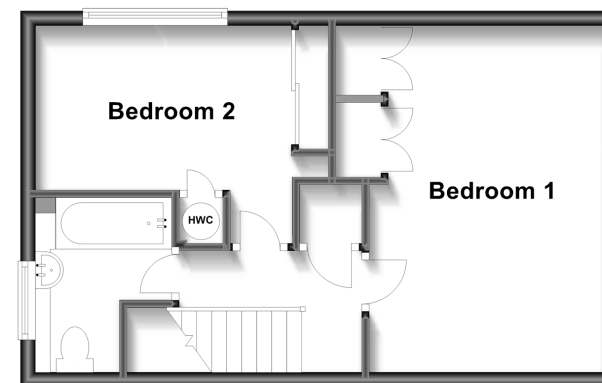
Third Floor

Approx. 36.0 sq. metres (388.0 sq. feet)



Fourth Floor

Approx. 36.0 sq. metres (388.0 sq. feet)



Call Ramsgate - 01843 580314 ■ wardsofkent.co.uk

- A private rental licensing scheme applies to some properties in this area, please contact us before proceeding
- Legal advice should be taken to verify fixtures/fittings, planning, alterations and/or lease details
- Appliances & services are untested, dimensions are approximate and floor plans are not to scale



11427697/20230216/ER/JR