



**Price**  
**£600,000**

**Freehold**

4x  2x  1x 

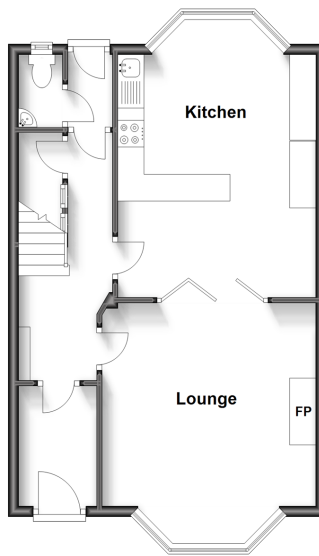
**St. Mildreds Road,  
Ramsgate, Kent, CT11**

*Wards*  
Helping you move forwards

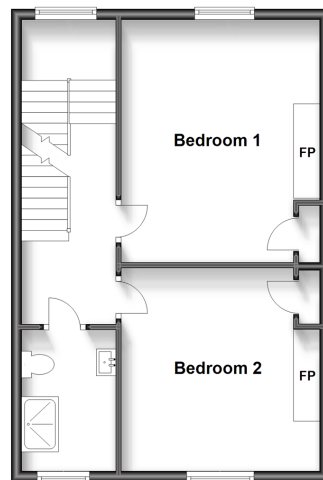
**Split Level Basement**  
Approx. 55.0 sq. metres (592.2 sq. feet)



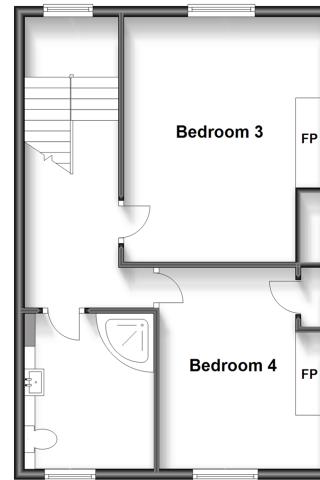
**Ground Floor**  
Approx. 48.8 sq. metres (525.4 sq. feet)



**First Floor**  
Approx. 47.9 sq. metres (515.8 sq. feet)



**Second Floor**  
Approx. 47.9 sq. metres (515.8 sq. feet)



## Accommodation

### GROUND FLOOR

Porch

Entrance Hallway

Lounge : 15'6 x 13'10 (4.73m x 4.22m)

Kitchen : 17'4 x 12'1 (5.29m x 3.69m)

Cloakroom

### SPLIT LEVEL BASEMENT

Living/Kitchen : 19'1 x 17'4 (5.82m x 5.29m)

Bedroom : 14'3 x 13'3 (4.35m x 4.04m)

Shower Room

### FIRST FLOOR

Landing

Bedroom 1: 14'9 x 12'1 (4.50m x 3.69m)

Bedroom 2: 12'8 x 12'2 (3.86m x 3.71m)

Shower Room

### SECOND FLOOR

Landing

Shower Room

Bedroom 3: 15'8 x 11'1 (4.78m x 3.38m)

Bedroom 4: 12'9 x 10'2 (3.89m x 3.10m)

### OUTSIDE

Garden to Rear





## Main features

- Full of character and charm, including elegant fireplaces
- Property includes a separate one bedroom basement maisonette
- Perfect family home, close to local amenities and a great selection of schools
- Sought after location
- Charming rear garden, an ideal place for relaxing in the summer months



### Nearest Schools

Primary Schools: Ramsgate, Christ Church C of E Junior School 0.0 miles, Chilton Primary 0.7 miles, St Laurence in Thanet C of E Junior School 0.8 miles  
Secondary Schools: Clarendon and Chatham House Grammar School 0.6 miles, St Lawrence College 1.4 miles



### Transport Information

Train Stations: Ramsgate 0.9 miles, Dumpton Park 2.1 miles, Broadstairs 3.6 miles



### Address

St. Mildreds Road, Ramsgate, Kent, CT11



### Directions

For directions to this property please contact us.





*Wards*  
Helping you move forwards

Call Ramsgate Branch 01843 580314 ■ [wardsofkent.co.uk](http://wardsofkent.co.uk)



- A private rental licensing scheme applies to some properties in this area, please contact us before proceeding
- Appliances & services are untested, dimensions are approximate and floor plans are not to scale

■ Legal advice should be taken to verify fixtures/fittings, planning, alterations and/or lease details



11429627/20230605/DL/JR