

OVER 60?

Secure this property
for up to **59% less!**



Price

£575,000

Freehold

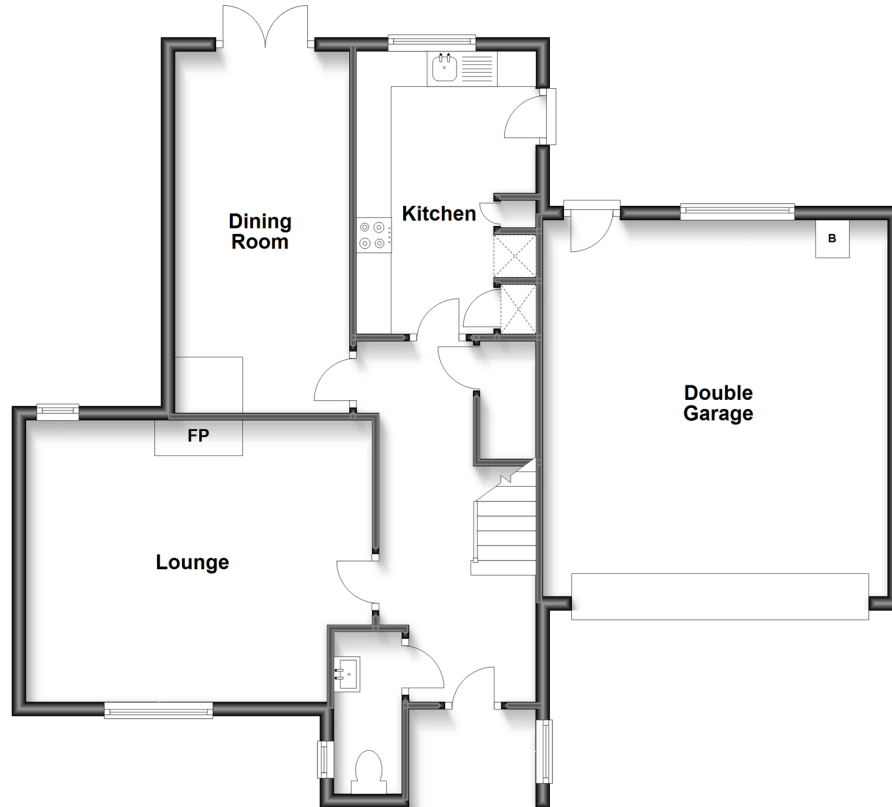
4x  2x  2x 

Nethercourt Farm Road, Ramsgate, Kent,
CT11

Wards
Helping you move forwards

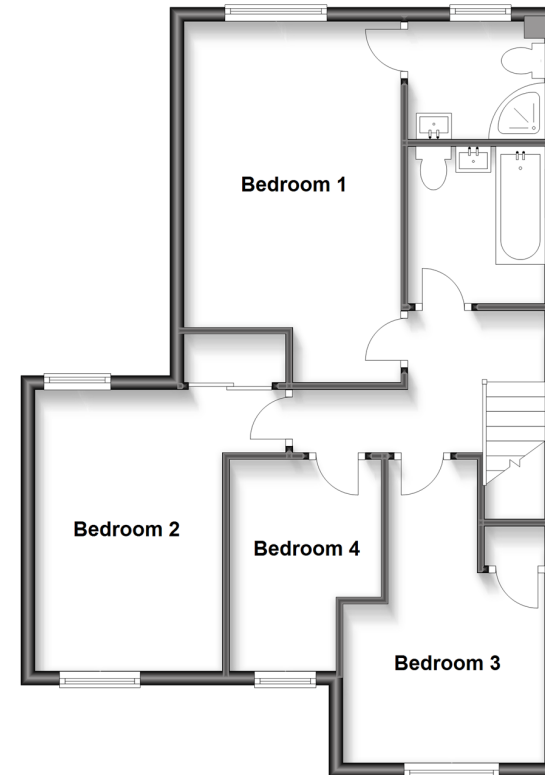
Ground Floor

Approx. 83.9 sq. metres (903.1 sq. feet)



First Floor

Approx. 59.7 sq. metres (642.1 sq. feet)



Accommodation

GROUND FLOOR

Entrance Hallway

Cloakroom

Lounge : 16'3 x 13'4 (4.96m x 4.07m)

Dining Room : 16'10 x 8'1 (5.13m x 2.47m)

Kitchen : 12'8 x 8'4 (3.86m x 2.54m)

FIRST FLOOR

Landing

Bedroom 1 : 16'10 x 10'3 (5.13m x 3.13m)

En-Suite Shower Room

Bedroom 2 : 14'4 x 9'7 (4.37m x 2.92m)

Bathroom

Bedroom 3 : 13'7 x 9'0 (4.14m x 2.75m)

Bedroom 4 : 10'4 x 7'0 (3.15m x 2.14m)

OUTSIDE

Double Garage

Garden to Front & Rear

Off Road Parking



Main features

- Beautiful spacious family home
- Stunning views across Nethercourt park
- Finished to a really high standard
- This home is perfect if you're looking for somewhere to just move straight in and enjoy
- Situated in a popular area of Nethercourt close to schools, shops and Ramsgate train station



Nearest Schools

Primary Schools: St Laurence in Thanet C of E Junior School 0.5 miles, Chilton Primary 0.6 miles, Newington Community Primary 1.0 miles
Secondary Schools: Chatham & Clarendon House Grammar School 1.1 miles, St Lawrence College 1.3 miles



Transport Information

Train Stations: Ramsgate 0.9 miles, Dumpton Park 2.1 miles, Broadstairs 3.2 miles



Address

Nethercourt Farm Road, Ramsgate, Kent, CT11



Directions

For directions to this property please contact us.



Call Ramsgate Branch 01843 580314 ■ wardsofkent.co.uk



- A private rental licensing scheme applies to some properties in this area, please contact us before proceeding
- Appliances & services are untested, dimensions are approximate and floor plans are not to scale

- Legal advice should be taken to verify fixtures/fittings, planning, alterations and/or lease details
- Through a Homewise Home For Life Plan people aged 60+ can secure this property for up to 59% less, by purchasing a Lifetime Lease.



11433390/20230126/PJ/DS