



Price
£325,000

Freehold

3x  1x  2x 

**Hollicondane Road,
Ramsgate, Kent, CT11**

OVER 60?

Secure this property
for up to **59% less!**



Video Tour available

Wards
Helping you move forwards



Main features

- Victorian home with period features
- Spacious rooms throughout
- Low maintenance rear garden
- Ideal home for a family set within a great catchment area for local schools
- Just a short walk to the train station and local bus routes

Accommodation

GROUND FLOOR

Entrance Hallway
 Lounge : 13'3 x 11'2 (4.04m x 3.41m)
 Dining Area: 12'0 x 9'3 (3.66m x 2.82m)
 Kitchen: 11'3 x 8'7 (3.43m x 2.62m)
 Conservatory : 10'6 x 8'6 (3.20m x 2.59m)
 Sun Room

FIRST FLOOR

Landing
 Bedroom 1: 14'8 x 14'6 (4.47m x 4.42m)
 Bedroom 2 : 12'0 x 9'4 (3.66m x 2.85m)
 Separate Toilet
 Bathroom : 8'8 x 8'5 (2.64m x 2.57m)

SECOND FLOOR

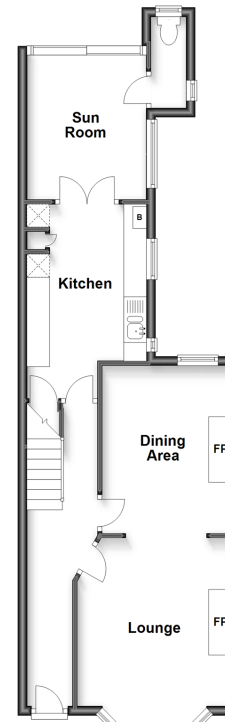
Bedroom 3 : 11'4 x 10'7 (3.46m x 3.23m)

OUTSIDE

Garden to Front
 Garden to Rear

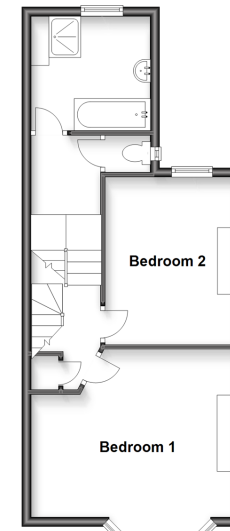
Split Level Ground Floor

Approx. 53.3 sq. metres (573.4 sq. feet)



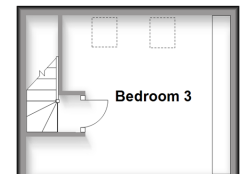
First Floor

Approx. 43.0 sq. metres (463.0 sq. feet)



Second Floor

Approx. 15.6 sq. metres (168.0 sq. feet)



Call Ramsgate - 01843 580314 ■ wardsofkent.co.uk

- A private rental licensing scheme applies to some properties in this area, please contact us before proceeding
- Appliances & services are untested, dimensions are approximate and floor plans are not to scale

- Legal advice should be taken to verify fixtures/fittings, planning, alterations and/or lease details
- Through a Homewise Home For Life Plan people aged 60+ can secure this property for up to 59% less, by purchasing a Lifetime Lease.