



Price
£280,000

Freehold

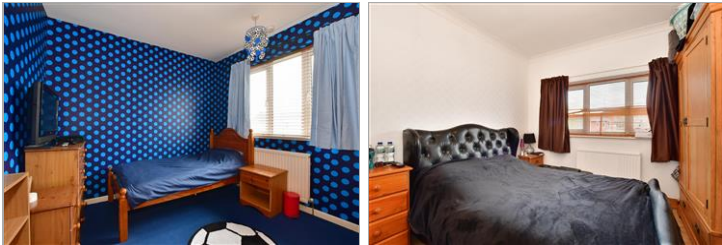
4x  1x  2x 

**Riversdale Road,
Ramsgate, Kent, CT12**



Video Tour available

Wards
Helping you move forwards



Main features

- Wonderful spacious family home
- Being sold with no onward chain
- Large rear garden with a separate patio and lawn area
- Located in a popular residential area close to local amenities
- Perfect for local transport links including bus routes and Ramsgate train station

Accommodation

GROUND FLOOR

Entrance Porch
 Entrance Hallway
 Separate Toilet
 Lounge : 20'4 x 13'3 (6.20m x 4.04m)
 Conservatory : 10'9 x 7'5 (3.28m x 2.26m)
 Kitchen : 11'8 x 10'4 (3.56m x 3.15m)
 Dining Room : 10'0 x 10'0 (3.05m x 3.05m)

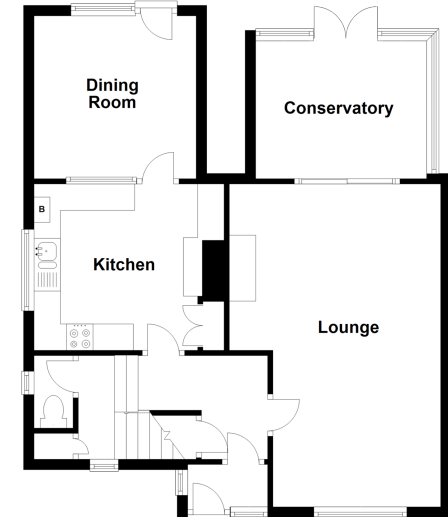
FIRST FLOOR

Landing
 Bedroom 4 : 10'4 x 5'10 (3.15m x 1.78m)
 Bedroom 2 : 10'1 x 10'0 (3.08m x 3.05m)
 Bedroom 1 : 13'4 x 10'6 (4.07m x 3.20m)
 Bedroom 3 : 9'9 x 9'5 (2.97m x 2.87m)
 Bathroom

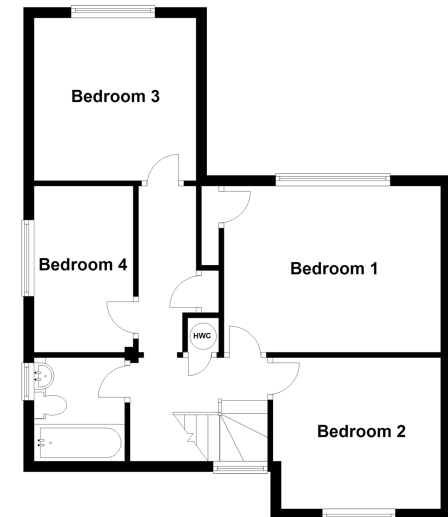
OUTSIDE

Off Road Parking
 Garden to Front & Rear

Ground Floor
 Approx. 63.1 sq. metres (678.7 sq. feet)



First Floor
 Approx. 52.7 sq. metres (567.1 sq. feet)



Call Ramsgate - 01843 580314 ■ wardsofkent.co.uk

- A private rental licensing scheme applies to some properties in this area, please contact us before proceeding
- Legal advice should be taken to verify fixtures/fittings, planning, alterations and/or lease details
- Appliances & services are untested, dimensions are approximate and floor plans are not to scale



11433656/20230104/DL/JR