



Price
£390,000

Freehold

3x  2x  1x 

**Rodney Street,
Ramsgate, Kent, CT11**

OVER 60?

Secure this property
for up to **59% less!**

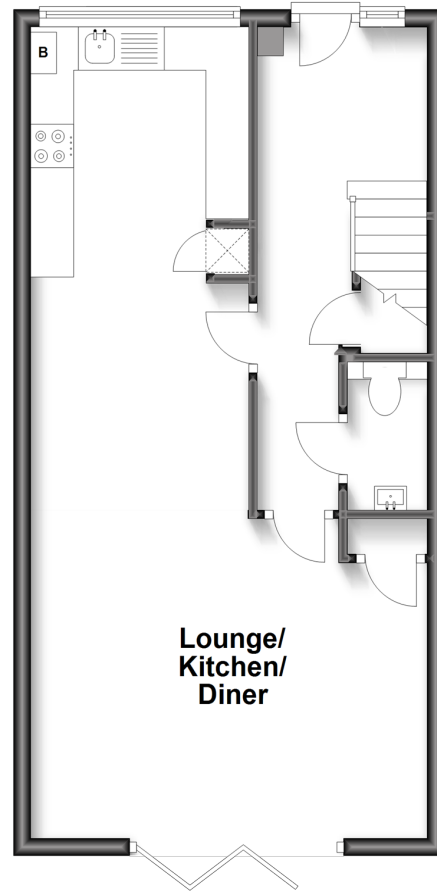


Video Tour available

Wards
Helping you move forwards

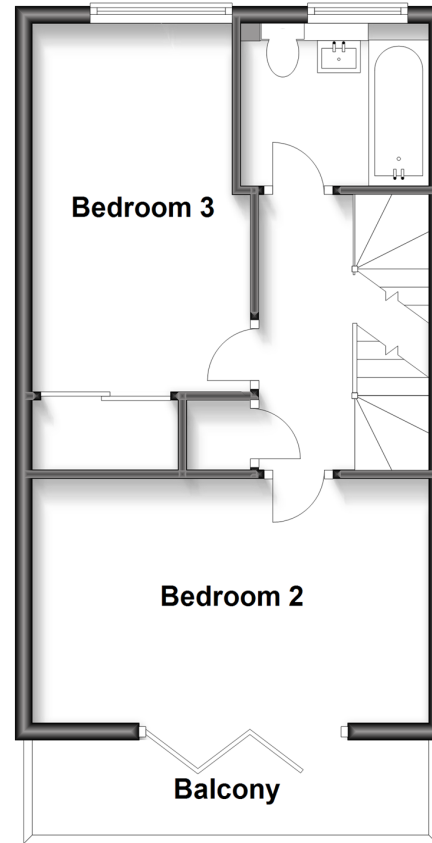
Ground Floor

Approx. 43.2 sq. metres (465.2 sq. feet)



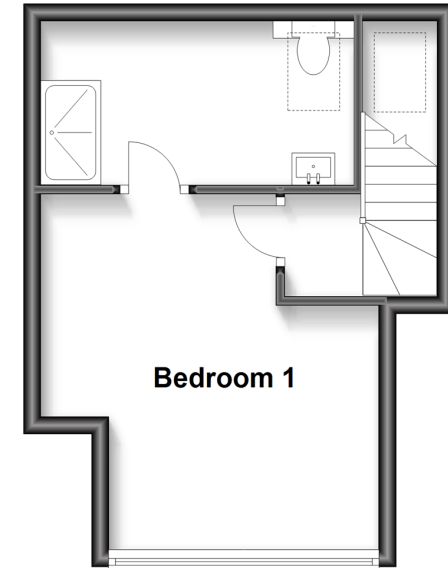
First Floor

Approx. 37.3 sq. metres (401.1 sq. feet)



Second Floor

Approx. 25.0 sq. metres (268.7 sq. feet)



Accommodation

GROUND FLOOR

Entrance Hallway

Lounge/Kitchen/Diner : 30'5 x 8'5 (9.28m x 2.57m)

Cloakroom

FIRST FLOOR

Landing

Bathroom

Bedroom 2 : 15'1 x 9'3 (4.60m x 2.82m)

Balcony

Bedroom 3 : 13'8 x 8'5 (4.17m x 2.57m)

SECOND FLOOR

Landing

Bedroom 1 : 13'11 x 12'10 (4.24m x 3.91m)

En-Suite Shower Room

OUTSIDE

Allocated Parking

Garden to Rear



Main features

- Located in the artist quarter of Ramsgate with allocated parking
- Beautifully presented throughout
- Wonderful open plan living
- The bi-fold doors open onto the pretty rear garden, a perfect place to relax in the summer months
- A short walk to the only Royal Harbour in the country



Nearest Schools

Primary Schools: Ramsgate, Christ Church C of E Junior School 0.5 miles, Chilton Primary 1.1 miles, St Laurence in Thanet C of E Junior School 1.2 miles
Secondary Schools: Clarendon & Chatham House Grammar School 0.2 miles, St Lawrence College 1.2 miles.



Transport Information

Train Stations: Ramsgate 1.2 miles, Dumpton Park 2.1 miles, Broadstairs 3.6 miles



Address

Rodney Street, Ramsgate, Kent, CT11



Directions

For directions to this property please contact us.



Wards
Helping you move forwards

Call Ramsgate Branch 01843 580314 ■ wardsofkent.co.uk



- A private rental licensing scheme applies to some properties in this area, please contact us before proceeding
- Appliances & services are untested, dimensions are approximate and floor plans are not to scale

- Legal advice should be taken to verify fixtures/fittings, planning, alterations and/or lease details
- Through a Homewise Home For Life Plan people aged 60+ can secure this property for up to 59% less, by purchasing a Lifetime Lease.



11433824/20240205/DL/ER