



Price
£290,000

Freehold

3x  1x  1x 

**Kimberley Road,
Ramsgate, Kent, CT12**

OVER 60?

Secure this property
for up to **59% less!**

Wards
Helping you move forwards



Main features

- Perfect first time buy or family home located in a popular residential area
- Large spacious rooms throughout
- Well maintained rear garden
- Situated close to local schools, bus routes and Ramsgate train station
- Off road parking

Accommodation

GROUND FLOOR

Entrance Hallway

Lounge : 20'2 x 12'4 (6.15m x 3.76m)

Kitchen : 11'1 x 11'1 (3.38m x 3.38m)

Cloakroom

FIRST FLOOR

Landing

Shower Room

Bedroom 1 : 12'2 x 10'0 (3.71m x 3.05m)

Bedroom 2 : 12'1 x 10'1 (3.69m x 3.08m)

Bedroom 3: 12'5 x 8'8 (3.79m x 2.64m)

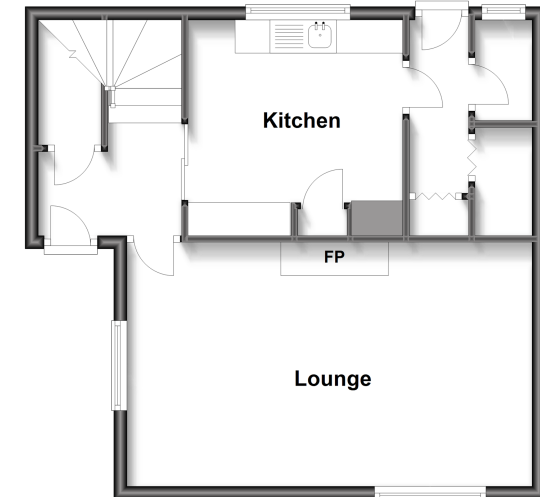
OUTSIDE

Garden to Front & Rear

Off Road Parking

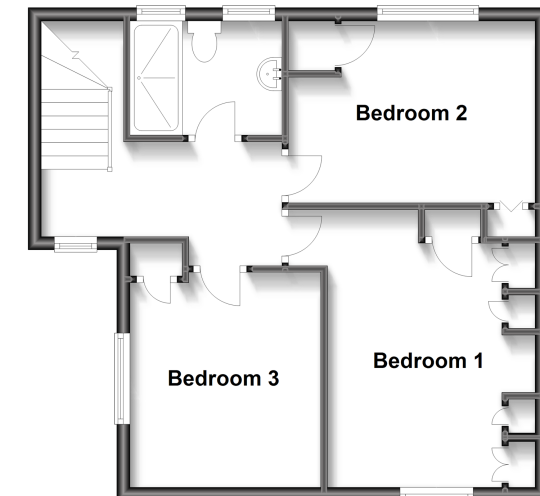
Ground Floor

Approx. 47.0 sq. metres (506.3 sq. feet)



First Floor

Approx. 47.0 sq. metres (506.3 sq. feet)



Call Ramsgate - 01843 580314 ■ wardsofkent.co.uk

- A private rental licensing scheme applies to some properties in this area, please contact us before proceeding
- Legal advice should be taken to verify fixtures/fittings, planning, alterations and/or lease details
- Appliances & services are untested, dimensions are approximate and floor plans are not to scale
- Through a Homewise Home For Life Plan people aged 60+ can secure this property for up to 59% less, by purchasing a Lifetime Lease.



11433875/20230125/JR/DS