



Price
£550,000

Freehold

4x  3x  1x 

**Queens Road,
Ramsgate, Kent, CT11**

Wards
Helping you move forwards

Accommodation

GROUND FLOOR

Entrance Hallway

Cloakroom

Lounge/Diner: (L-shaped) 18'9 x 17'3
(5.72m x 5.26m) plus 12'1 x 10'4 (3.69m x 3.15m)

Kitchen : 12'5 x 11'3 (3.79m x 3.43m)

FIRST FLOOR

Landing

Bedroom 1 : 18'9 x 10'7 (5.72m x 3.23m)

Balcony

En-Suite Shower Room

Bedroom 2 : 18'9 x 10'5 (5.72m x 3.18m)

En-Suite Shower Room

SECOND FLOOR

Landing

Bedroom 3 : 18'10 x 11'6 (5.74m x 3.51m)

Bathroom : 12'0 x 7'4 (3.66m x 2.24m)

Bedroom 4 : 18'9 x 10'5 (5.72m x 3.18m)

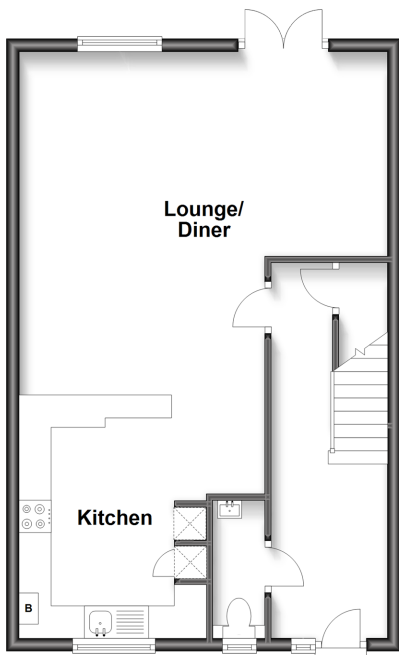
OUTSIDE

Garden to Rear

Off Road Parking

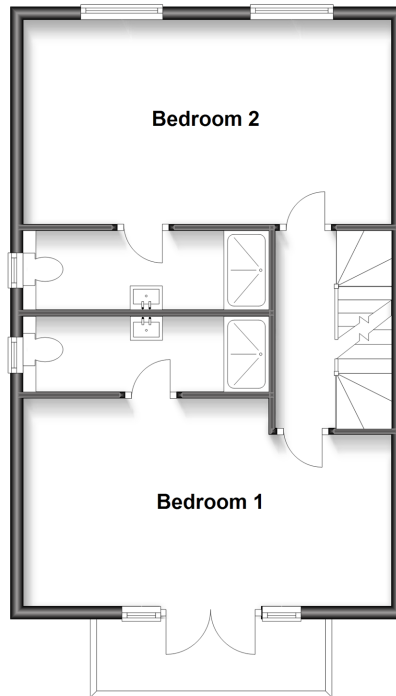
Ground Floor

Approx. 51.9 sq. metres (558.8 sq. feet)



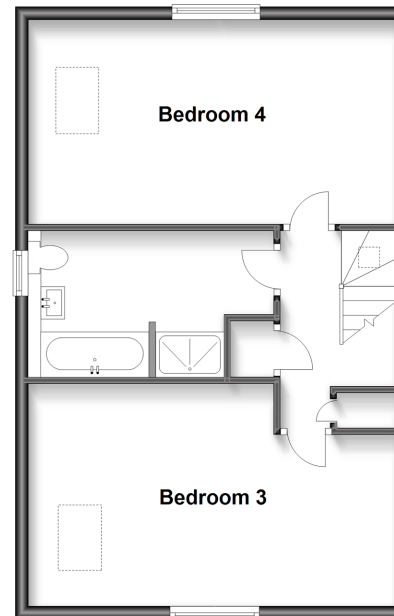
First Floor

Approx. 51.9 sq. metres (558.8 sq. feet)



Second Floor

Approx. 51.9 sq. metres (558.8 sq. feet)





Main features

- Brand new home with off road parking
- Bedroom 1 has a wonderful balcony with sea views and space for a bistro set
- Ideal family home with main bathroom and 2 en-suites
- Low maintenance rear garden with a patio seating area and lawn
- East Cliff location, just a short stroll to the harbour with its selection of bars and restaurants



Nearest Schools

Primary Schools: St Ethelbert's Catholic Primary 0.2 miles, Ramsgate, Holy Trinity C of E Primary 0.5 miles, Newlands Primary 0.6 miles
Secondary Schools: Chatham & Clarendon House Grammar School 0.5 miles, St Lawrence College 0.6 miles



Transport Information

Train Stations: Dumpton Park 1.0 miles, Ramsgate 1.2 miles, Broadstairs 2.1 miles



Address

Queens Road, Ramsgate, Kent, CT11



Directions

For directions to this property please contact us.



Call Ramsgate Branch 01843 580314 ■ wardsofkent.co.uk



- A private rental licensing scheme applies to some properties in this area, please contact us before proceeding
- Appliances & services are untested, dimensions are approximate and floor plans are not to scale

- Legal advice should be taken to verify fixtures/fittings, planning, alterations and/or lease details



11433888/20231124/JR/PJ