



Price

£400,000

Freehold

4x  2x  1x 

**Southwood Gardens,
Ramsgate, Kent, CT11**

OVER 60?

Secure this property
for up to **59% less!**



Video Tour available

Wards
Helping you move forwards



Main features

- Off road parking for multiple cars
- Wrap around garden, complete with a garden 'snug'
- Ideal family home in a highly popular residential area
- Close to all local amenities
- The kitchen/diner really is the hub of the home

Accommodation

GROUND FLOOR

Porch

Entrance Hallway

Shower Room

Bedroom 4(used as a salon): 9'3 x 8'9
(2.82m x 2.67m)

Lounge : 12'6 x 11'9 (3.81m x 3.58m)

Kitchen/Diner : 29'3 (8.92m) x 10'4 (3.15m)
narrowing to 8'3 (2.52m)

FIRST FLOOR

Landing

Bedroom 3 : 8'9 x 7'7 (2.67m x 2.31m)

Bedroom 1 : 12'6 x 11'2 (3.81m x 3.41m)

Bedroom 2 : 11'2 x 9'8 (3.41m x 2.95m)

Bathroom

OUTSIDE

Garden to Front & Rear

Garage and Off Road Parking

Out building

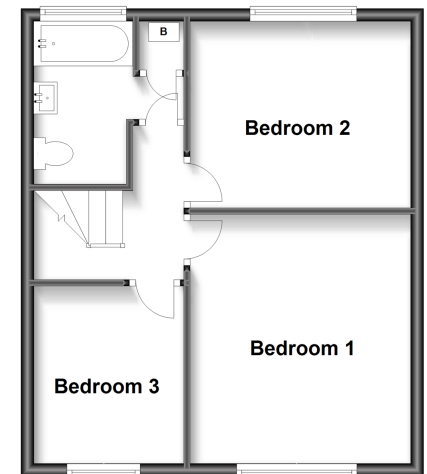
Call Ramsgate - 01843 580314 ■ wardsofkent.co.uk

- A private rental licensing scheme applies to some properties in this area, please contact us before proceeding
- Legal advice should be taken to verify fixtures/fittings, planning, alterations and/or lease details
- Appliances & services are untested, dimensions are approximate and floor plans are not to scale
- Through a Homewise Home For Life Plan people aged 60+ can secure this property for up to 59% less, by purchasing a Lifetime Lease.

Ground Floor
Approx. 62.4 sq. metres (671.5 sq. feet)



First Floor
Approx. 41.1 sq. metres (441.9 sq. feet)



11433955/20230510/ER/JR