



Price
£625,000

Freehold

6x  2x  3x 

**South Eastern Road,
Ramsgate, Kent, CT11**

OVER 60?

Secure this property
for up to **59% less!**

Wards
Helping you move forwards

Accommodation

SPLIT LEVEL GROUND FLOOR

Porch

Entrance Hallway

Lounge : 18'2 x 12'4 (5.54m x 3.76m)

Study: 9'6 x 5'0 (2.90m x 1.53m)

Dining Room : 12'5 x 12'2 (3.79m x 3.71m)

Breakfast Room : 12'3 x 10'9 (3.74m x 3.28m)

Kitchen : 10'8 x 10'2 (3.25m x 3.10m)

BASEMENT

Inner Hallway

Cellar

FIRST FLOOR

Landing

Bedroom 3: 10'6 x 8'2 (3.20m x 2.49m)

En-Suite Shower Room

Bathroom

Separate Toilet

Bedroom 2 : 12'4 x 12'3 (3.76m x 3.74m)

Bedroom 1 : 17'9 x 16'1 (5.41m x 4.91m)

Bedroom 6 : 9'6 x 5'5 (2.90m x 1.65m)

SECOND FLOOR

Landing

Bedroom 4 : 11'9 x 8'10 (3.58m x 2.69m)

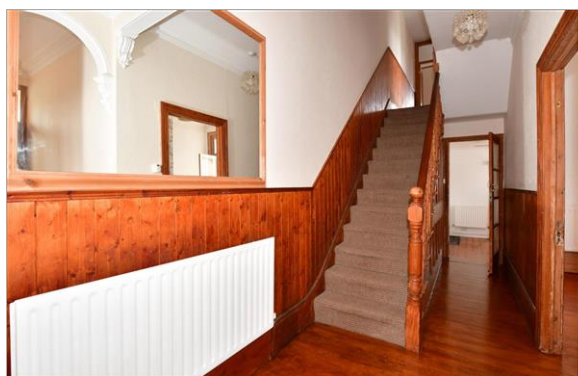
Bedroom 5 : 12'6 x 7'3 (3.81m x 2.21m)

OUTSIDE

Garden to Front & Rear

Car Port and Off Road Parking





Main features

- Being sold with no onward chain
- Off road parking and a courtyard garden
- On a large corner plot
- Spacious rooms throughout, arranged over 4 floors
- Located in a sought-after area; just a short walk from Ramsgate' town, transport links and local park



Nearest Schools

Primary Schools: Ramsgate, Christ Church C of E Junior School 0.3 miles, St Laurence in Thanet C of E Junior School 0.7 miles, Newlands Primary 0.9 miles
Secondary Schools: Clarendon & Chatham House Grammar School 0.5 miles, St Lawrence College 0.9 miles



Transport Information

Train Stations: Ramsgate 0.8 miles, Dumpton Park 1.6 miles, Broadstairs 3.1 miles



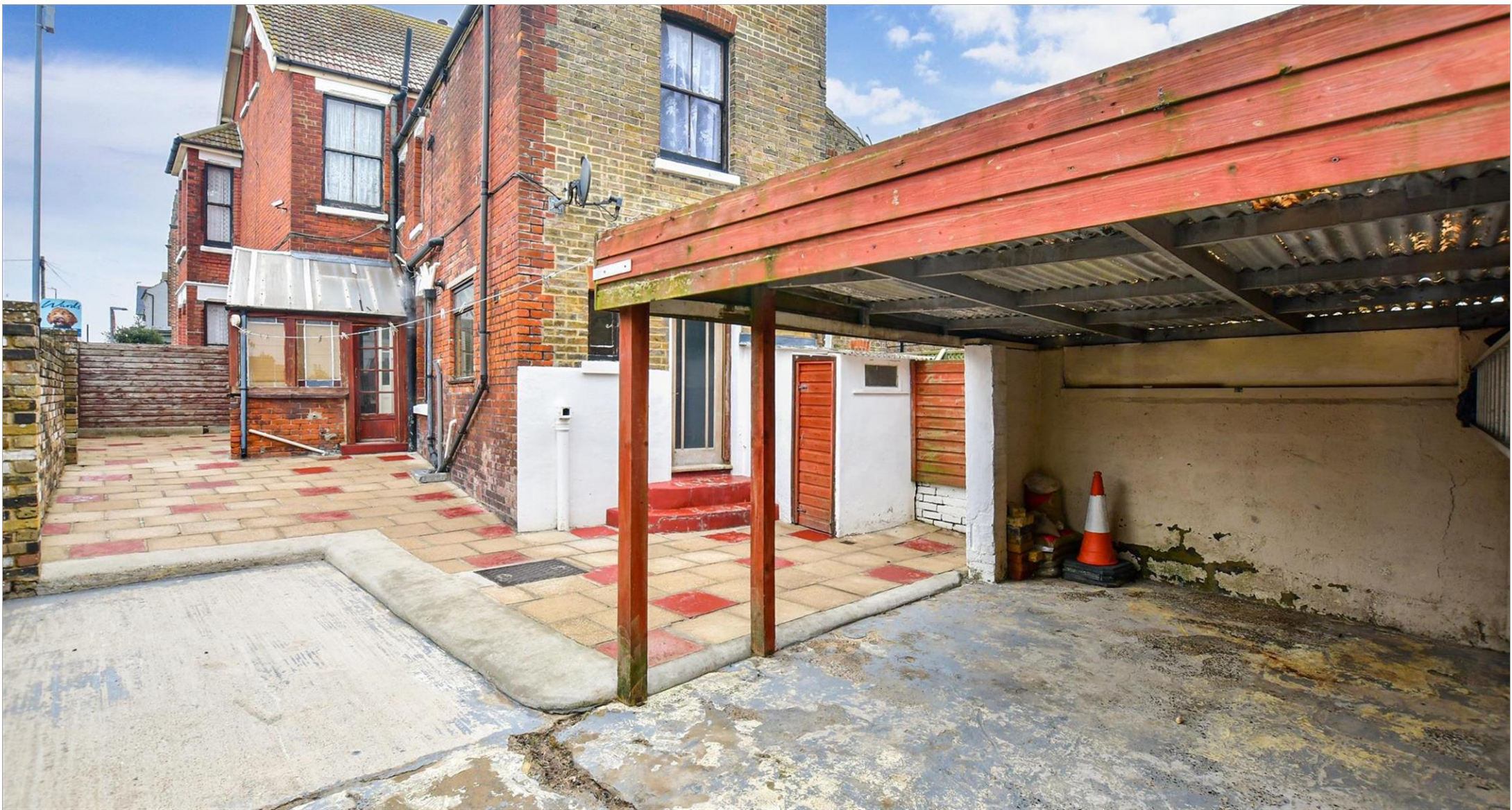
Address

South Eastern Road, Ramsgate, Kent, CT11



Directions

For directions to this property please contact us.



Call Ramsgate Branch 01843 580314 ■ wardsofkent.co.uk



- A private rental licensing scheme applies to some properties in this area, please contact us before proceeding
- Appliances & services are untested, dimensions are approximate and floor plans are not to scale

- Legal advice should be taken to verify fixtures/fittings, planning, alterations and/or lease details
- Through a Homewise Home For Life Plan people aged 60+ can secure this property for up to 59% less, by purchasing a Lifetime Lease.



11433978/20230213/JR/PJ