



**OVER 60?**

Secure this property  
for up to **59% less!**

**Price**

**£600,000**

**Freehold**

5x  4x  2x 

**Dumpton Park Drive,  
Ramsgate, Kent, CT11**

*Wards*  
Helping you move forwards

## Accommodation

### GROUND FLOOR

Entrance Hallway

Cloakroom

Study: 11'3 x 9'2 (3.43m x 2.80m)

Lounge : 17'9 x 12'8 (5.41m x 3.86m)

Kitchen/Breakfast Room : 27'5 x 9'1 (8.36m x 2.77m)

Dining Area : 10'0 x 9'7 (3.05m x 2.92m)

### FIRST FLOOR

Landing

Bedroom 3: 11'3 x 9'4 (3.43m x 2.85m)

Balcony

Bathroom

Living Area: 27'5 x 12'5 (8.36m x 3.79m)

Balcony

Bedroom 1 : 12'2 x 9'8 (3.71m x 2.95m)

En-Suite Shower Room

Dressing Area

### SECOND FLOOR

Landing

Bedroom 2 : (L-shaped) 22'6 x 21'3 (6.86m x 6.48m) plus 12'5 x 6'8 (3.79m x 2.03m)

En-Suite Shower Room

Bedroom 4 : 11'3 x 10'8 (3.43m x 3.25m)

Bedroom 5 : 9'8 x 9'5 (2.95m x 2.87m)

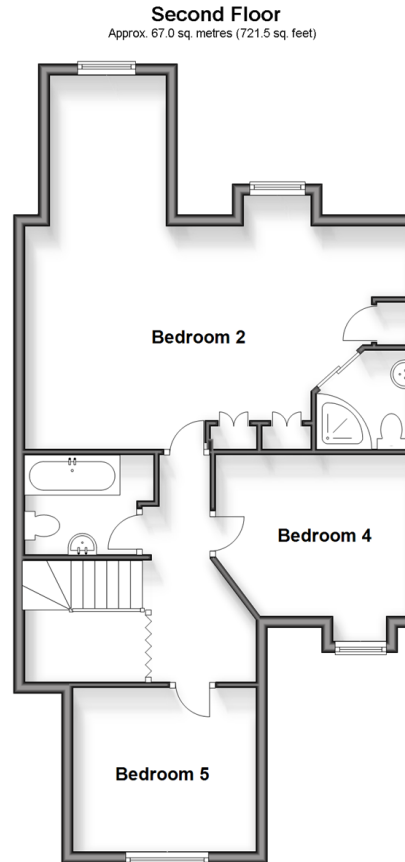
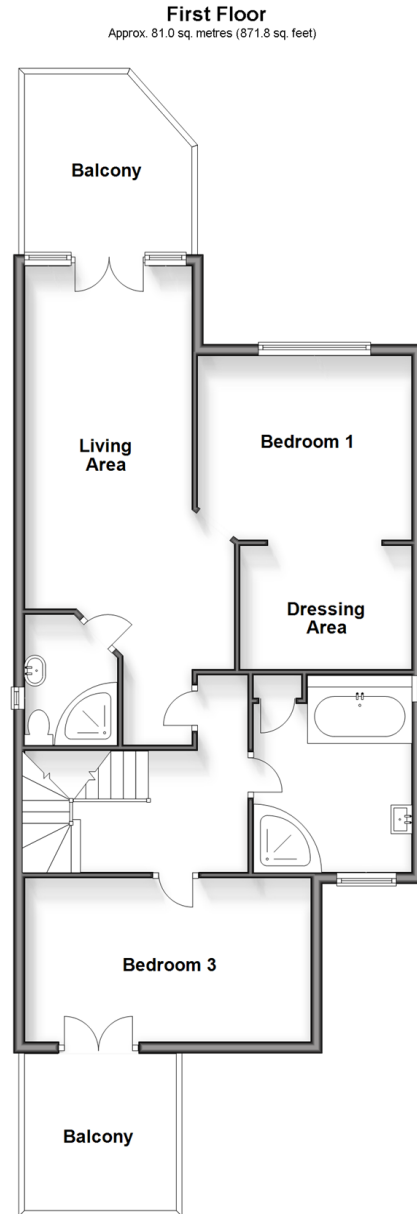
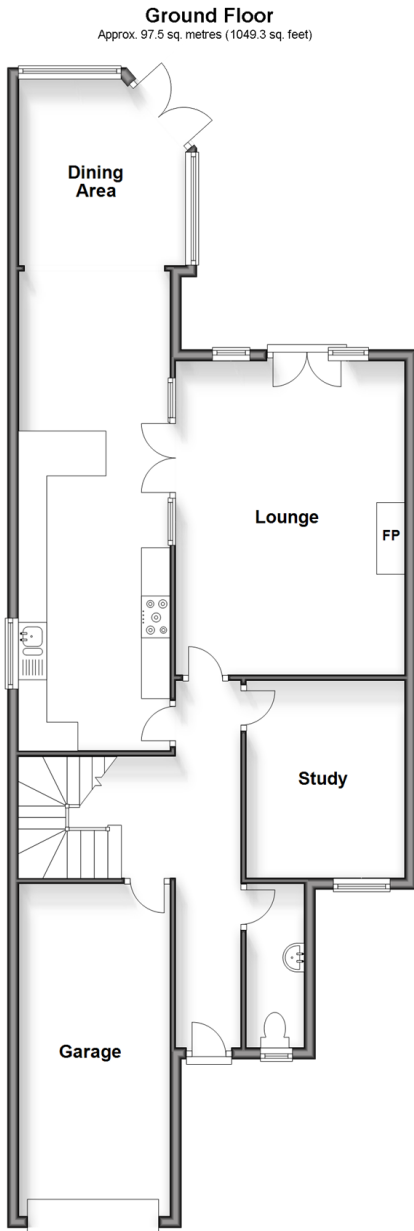
Bathroom

### OUTSIDE

Garage with Utility Area

Off Road Parking

Garden to Rear







## Main features

- Off road parking for multiple cars
- Two balconies and sea views from the second floor
- Prestigious family home
- Generous sized living throughout, set across 3 floors with a beautifully presented rear garden
- Just a short walk from the highly desirable East Cliff which has stunning views of the English Channel



### Nearest Schools

Primary Schools: St Ethelbert's Catholic Primary 0.2 miles, Ramsgate, Holy Trinity C of E Primary 0.5 miles, Newlands Primary 0.5 miles  
Secondary Schools: St Lawrence College 0.6 miles, Clarendon and Chatham House Grammar School.



### Transport Information

Train Stations: Dumpton Park 0.4 miles, Ramsgate 0.9 miles, Broadstairs 1.4 miles



### Address

Dumpton Park Drive, Ramsgate, Kent, CT11



### Directions

For directions to this property please contact us.





**Wards**  
Helping you move forwards

Call Ramsgate Branch 01843 580314 ■ [wardsofkent.co.uk](http://wardsofkent.co.uk)



- A private rental licensing scheme applies to some properties in this area, please contact us before proceeding
- Appliances & services are untested, dimensions are approximate and floor plans are not to scale

- Legal advice should be taken to verify fixtures/fittings, planning, alterations and/or lease details
- Through a Homewise Home For Life Plan people aged 60+ can secure this property for up to 59% less, by purchasing a Lifetime Lease.



11434168/20240420/DL/JR