



**Price**  
**£160,000**

**Leasehold**

2x  1x  1x 

**Meridian Close,  
Ramsgate, Kent, CT12**

*Wards*  
Helping you move forwards



## Main features

- Second floor apartment
- Lovely condition throughout
- Allocated parking space
- Great catchment area for schools, shops and transport links; including motorway links
- Perfect for a first time buyer looking to step onto the property ladder

## Accommodation

### SECOND FLOOR

Entrance Hallway

Bedroom 1: 13'6 x 12'7 (4.12m x 3.84m)

Bathroom

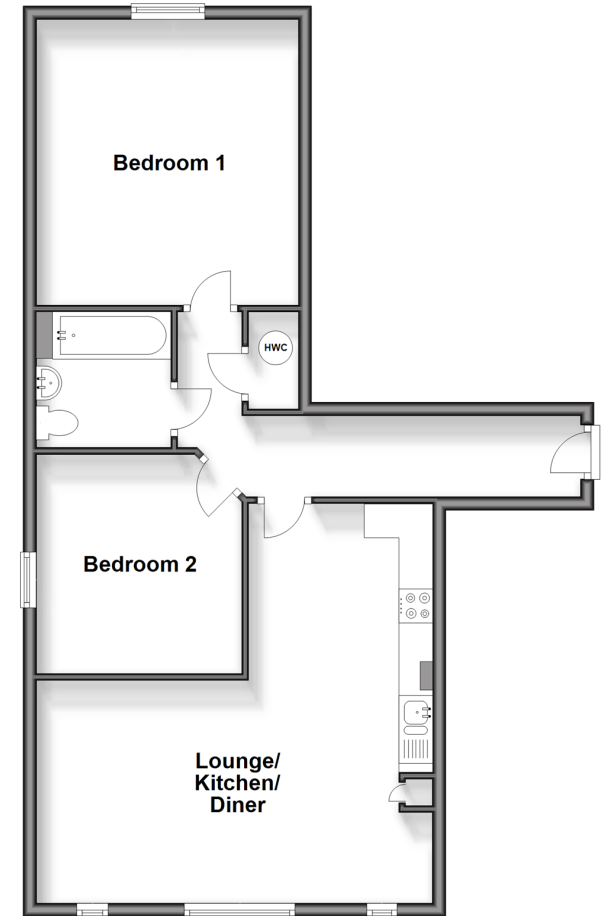
Bedroom 2 : 10'6 x 10'3 (3.20m x 3.13m)

Lounge/Kitchen/Diner : 19'4 x 19'3 (5.90m x 5.87m) narrowing to 10'7 x 8'9 (3.23m x 2.67m)

### OUTSIDE

Allocated Parking Space

**Second Floor**  
Approx. 67.6 sq. metres (727.5 sq. feet)



**Call Ramsgate - 01843 580314 ■ [wardsofkent.co.uk](http://wardsofkent.co.uk)**

- A private rental licensing scheme applies to some properties in this area, please contact us before proceeding
- Legal advice should be taken to verify fixtures/fittings, planning, alterations and/or lease details
- Appliances & services are untested, dimensions are approximate and floor plans are not to scale



11434298/20240122/BW/JR