



OVER 60?

Secure this property
for up to **59% less!**

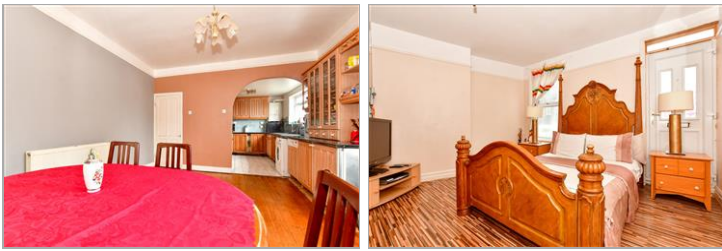
Guide Price
£300,000

Freehold

4x  1x  4x 

**Arklow Square,
Ramsgate, Kent, CT11**

Wards
Helping you move forwards



Main features

- Planning granted for a two storey rear extension FH/TH/21/1654
- Spacious living throughout
- Ideal for a growing family
- Located just a short walk from the highly desirable East Cliff area
- Being sold with no onward chain

Accommodation

GROUND FLOOR

Entrance Hallway

Lounge : 16'2 x 12'7 (4.93m x 3.84m)

Kitchen : 8'9 x 7'8 (2.67m x 2.34m)

Dining Area: 18'2 x 12'8 (5.54m x 3.86m)

LOWER GROUND FLOOR

Basement 1 : 21'2 x 9'5 (6.46m x 2.87m)

Basement 2 : 17'2 x 9'9 (5.24m x 2.97m)

SPLIT LEVEL FIRST FLOOR

Bedroom 1 : 13'2 x 12'7 (4.02m x 3.84m)

Bedroom 2 : 12'8 x 12'3 (3.86m x 3.74m)

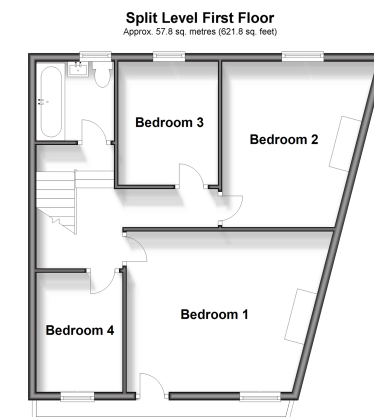
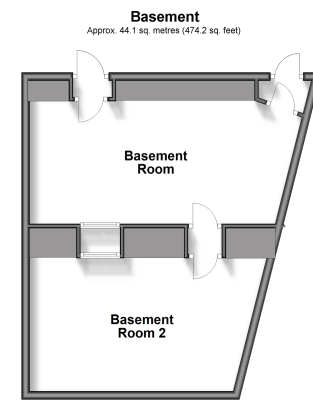
Bedroom 3 : 9'6 x 7'6 (2.90m x 2.29m)

Bedroom 4 : 6'9 x 6'9 (2.06m x 2.06m)

Bathroom

OUTSIDE

Garden to Rear



Call Ramsgate - 01843 580314 ■ wardsofkent.co.uk

- A private rental licensing scheme applies to some properties in this area, please contact us before proceeding
- Legal advice should be taken to verify fixtures/fittings, planning, alterations and/or lease details
- Appliances & services are untested, dimensions are approximate and floor plans are not to scale
- Through a Homewise Home For Life Plan people aged 60+ can secure this property for up to 59% less, by purchasing a Lifetime Lease.



11434315/20240323/DL/JR