



OVER 60?

Secure this property
for up to **59% less!**

Guide Price
£350,000

Freehold

4x  2x  1x 

**Royal Mews, Albion
Road, Ramsgate, Kent,
CT11**

Wards
Helping you move forwards



Main features

- Being sold with no onward chain
- Garage en-bloc
- Courtyard garden
- Within walking distance of stunning views of the English Channel from Ramsgate's East Cliff
- Boasting spacious living throughout; ideal for a growing family

Accommodation

GROUND FLOOR

Entrance Hallway
 Kitchen : 11'0 x 10'1 (3.36m x 3.08m)
 Cloakroom
 Lounge/Diner : 15'3 x 14'2 (4.65m x 4.32m)

FIRST FLOOR

Landing
 Shower Room
 Bedroom 1 : 14'2 x 9'5 (4.32m x 2.87m)
 Bedroom 2 : 14'2 x 9'5 (4.32m x 2.87m)

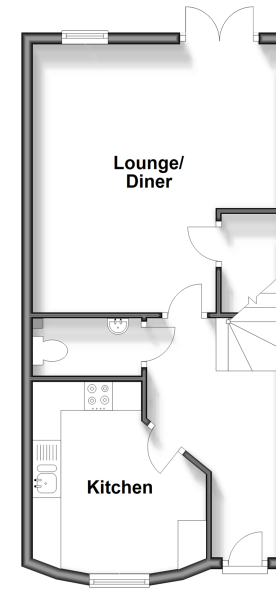
SECOND FLOOR

Landing
 Bedroom 3 : 14'3 x 9'6 (4.35m x 2.90m)
 Bedroom 4 : 12'7 x 7'5 (3.84m x 2.26m)
 Bedroom 5 : 9'5 x 6'6 (2.87m x 1.98m)
 Bathroom

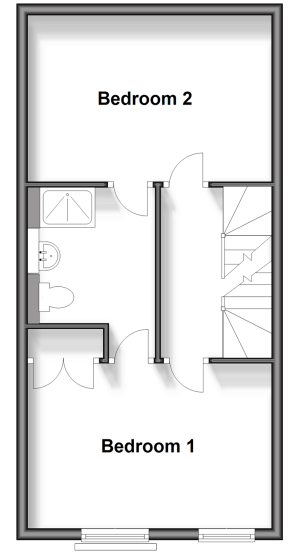
OUTSIDE

Garden to Rear
 Garage En Bloc

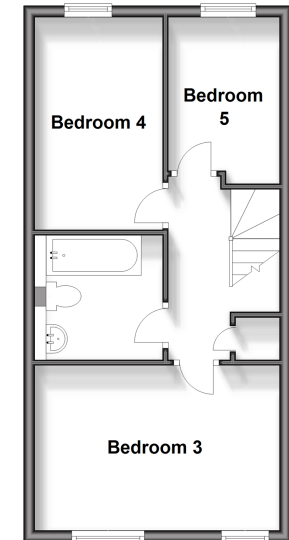
Ground Floor
 Approx. 39.5 sq. metres (425.1 sq. feet)



First Floor
 Approx. 38.8 sq. metres (418.0 sq. feet)



Second Floor
 Approx. 38.8 sq. metres (418.0 sq. feet)



Call Ramsgate - 01843 580314 ■ wardsofkent.co.uk

- A private rental licensing scheme applies to some properties in this area, please contact us before proceeding
- Legal advice should be taken to verify fixtures/fittings, planning, alterations and/or lease details
- Appliances & services are untested, dimensions are approximate and floor plans are not to scale
- Through a Homewise Home For Life Plan people aged 60+ can secure this property for up to 59% less, by purchasing a Lifetime Lease.



11434362/20240406/MB/JR