



OVER 60?

Secure this property
for up to **59% less!**

Price

£450,000

Freehold

5x  2x  2x 

**Homestead Village,
London Road,
Ramsgate, Kent, CT11**

Wards
Helping you move forwards

Accommodation

GROUND FLOOR

Entrance Hall

Utility Room: 5'6 x 4'2 (1.68m x 1.27m)

Kitchen: 11'10 x 8'1 (3.61m x 2.47m)

Lounge: 14'10 x 13'8 (4.52m x 4.17m)

Conservatory: 15'3 x 9'9 (4.65m x 2.97m)

Family Room(Former Garage): 17'11 x 8'5
(5.46m x 2.57m)

FIRST FLOOR

Landing

Bedroom 2: 14'9 x 12'11 (4.50m x 3.94m)

En-suite Shower Room

Bedroom 4: 10'7 x 8'1 (3.23m x 2.47m)

Bedroom 3: 18'0 x 8'8 (5.49m x 2.64m)

Wet Room

SECOND FLOOR

Landing

Bedroom 1 with Bath: 20'3 x 11'5 (6.18m x 3.48m)

Bedroom 5: 9'9 x 8'0 (2.97m x 2.44m)

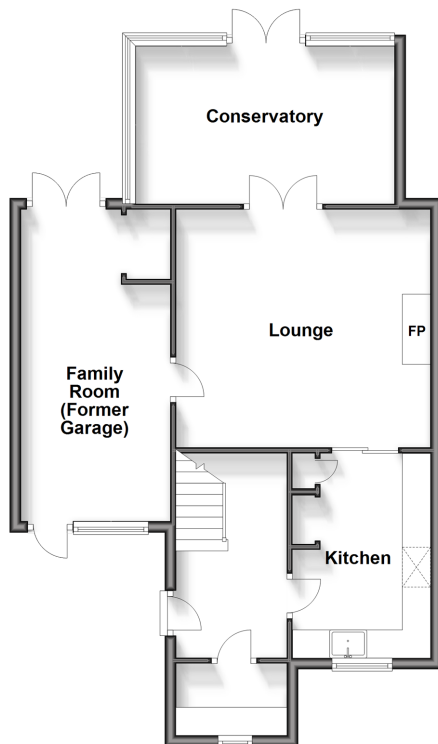
OUTSIDE

Driveway

Garden to Rear

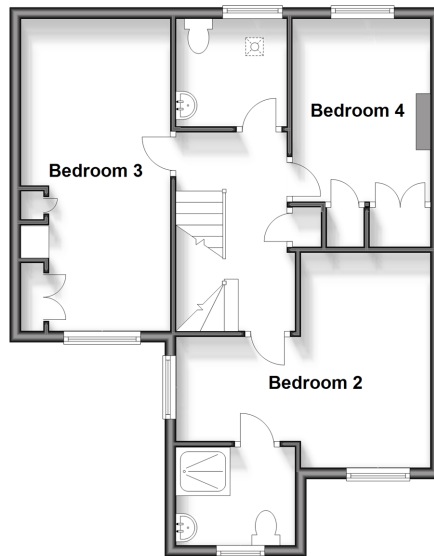
Ground Floor

Approx. 67.6 sq. metres (727.7 sq. feet)



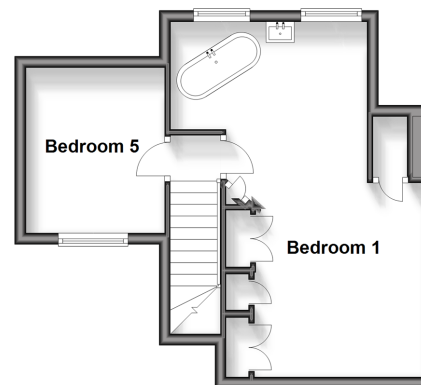
First Floor

Approx. 54.4 sq. metres (585.7 sq. feet)



Second Floor

Approx. 33.7 sq. metres (362.5 sq. feet)





Main features

- Off road parking
- Private low maintenance rear garden
- Great catchment area for highly rated schools for all ages
- Boasting spacious living throughout and complete with a lovely conservatory
- Beautifully presented family home located in a quiet cul-de-sac just moments from the picturesque West Cliff



Nearest Schools

Primary Schools: Ramsgate, Christ Church C of E Junior School 0.1 miles, Chilton Primary 0.4 miles, St Laurence in Thanet C of E Junior School 0.6 miles
Secondary Schools: Clarendon and Chatham House Grammar School 0.5 miles, St Lawrence College 1.0 miles



Transport Information

Train Stations: Ramsgate 0.7 miles, Dumpton Park 1.5 miles, Broadstairs 2.5 miles



Address

Homestead Village, London Road, Ramsgate, Kent, CT11



Directions

For directions to this property please contact us.



Call Ramsgate Branch 01843 580314 ■ wardsofkent.co.uk



- A private rental licensing scheme applies to some properties in this area, please contact us before proceeding
- Appliances & services are untested, dimensions are approximate and floor plans are not to scale

- Legal advice should be taken to verify fixtures/fittings, planning, alterations and/or lease details
- Through a Homewise Home For Life Plan people aged 60+ can secure this property for up to 59% less, by purchasing a Lifetime Lease.



11434398/20240323/DL/JR