



**Guide Price**  
**£470,000**

**Freehold**

3x  2x  1x 

**Love Lane, Rochester,  
Kent, ME1**

**OVER 60?**

Secure this property  
for up to **59% less!**

*Wards*  
Helping you move forwards





## Main features

- Situated in one of Rochester's most sought after roads
- Far reaching views of the River Medway
- Walking distance to historic High Street with Castle and Cathedral
- Offered with no forward chain
- Garage and car port

## Accommodation

### GROUND FLOOR

Car Port  
Garage  
Entrance Hall

### FIRST FLOOR

Hallway  
Cloakroom: 4'7 x 3'1 (1.40m x 0.94m)  
Lounge: 12'4 x 11'3 (3.76m x 3.43m)  
Kitchen: 12'9 x 12'8 (3.89m x 3.86m)

### SECOND FLOOR

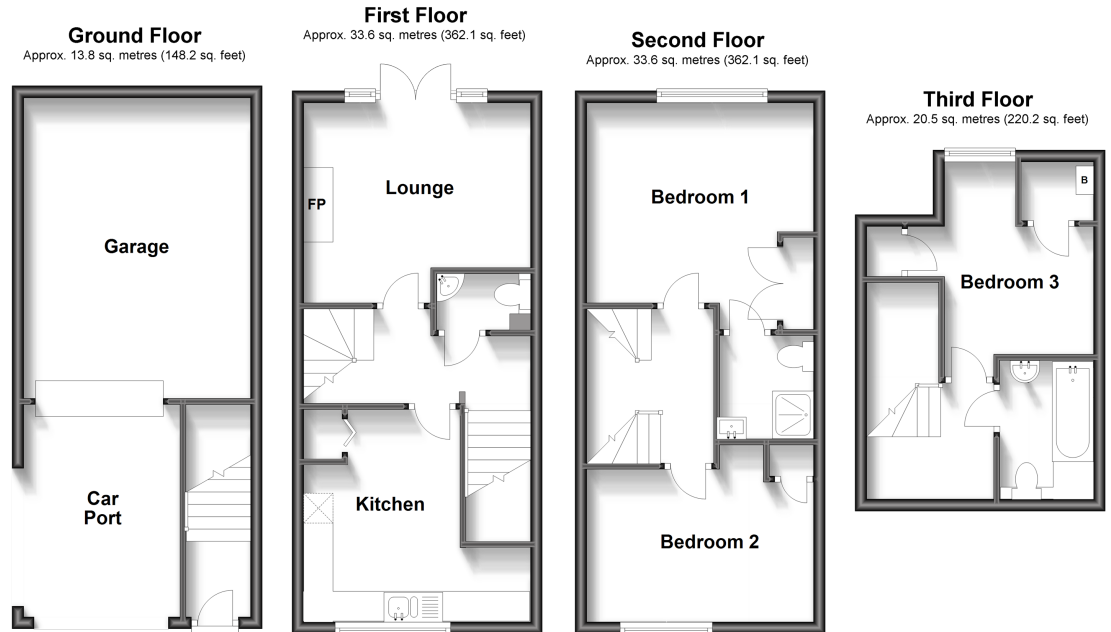
Landing  
Bedroom 1: 17'4 x 13'11 (5.29m x 4.24m)  
En-suite Shower Room: 5'7 x 5'7 (1.70m x 1.70m)  
Bedroom 2: 12'5 x 10'3 (3.79m x 3.13m)

### THIRD FLOOR

Landing  
Bedroom 3: 10'8 x 10'5 (3.25m x 3.18m)  
Bathroom: 6'9 x 4'9 (2.06m x 1.45m)

### OUTSIDE

Rear Garden  
Garage and Car Port



Call Rochester - 01634 830925 ■ [wardsofkent.co.uk](http://wardsofkent.co.uk)

■ Legal advice should be taken to verify fixtures/fittings, planning, alterations and/or lease details  
■ Through a Homewise Home For Life Plan people aged 60+ can secure this property for up to 59% less, by purchasing a Lifetime Lease.

■ Appliances & services are untested, dimensions are approximate and floor plans are not to scale