



OVER 60?

You could get up to
59% off the price!*

Price

£600,000

Freehold

4x  1x  2x 

**Trafalgar Close,
Wouldham, Rochester,
Kent, ME1**

Wards
Helping you move forwards



Main features

- Picturesque village location offering beautiful walks nearby
- Extended accommodation allowing space for a growing family
- Gym/Workshop
- Off-road parking
- Close to motorway links M2/M20/A2

Accommodation

GROUND FLOOR

Hallway

Lounge/Diner: 26'0 x 11'9 (7.93m x 3.58m)

Kitchen: 17'8 x 11'2 (5.39m x 3.41m)

Family Room: 13'8 x 8'8 (4.17m x 2.64m)

Gym/Workshop: 16'7 x 8'2 (5.06m x 2.49m)

FIRST FLOOR

Landing

Bedroom 1: 12'0 x 11'8 (3.66m x 3.56m)

Bedroom 2: 11'2 x 9'2 (3.41m x 2.80m)

Cloakroom

Bedroom 3: 12'8 x 10'8 (3.86m x 3.25m)

Bedroom 4: 9'2 x 7'2 (2.80m x 2.19m)

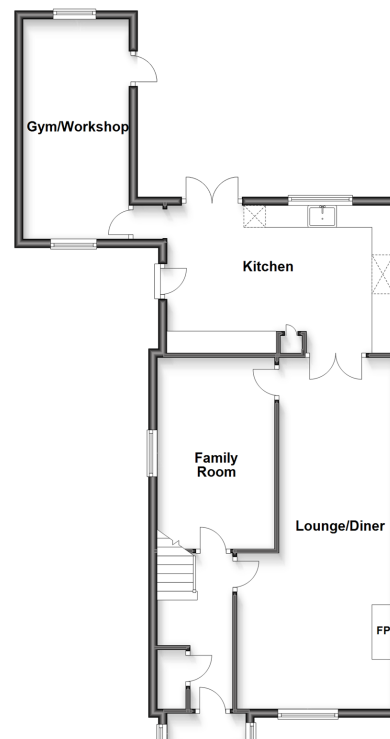
Bathroom: 7'7 x 7'6 (2.31m x 2.29m)

OUTSIDE

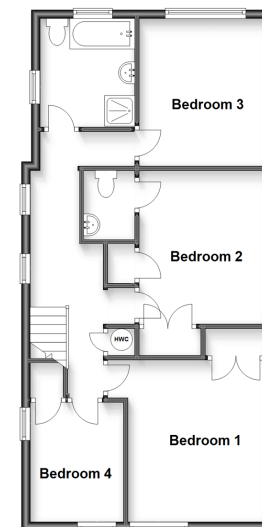
Front and Rear Garden

Off-road Parking

Ground Floor
Approx. 76.5 sq. metres (823.0 sq. feet)



First Floor
Approx. 62.1 sq. metres (668.4 sq. feet)



Call Rochester - 01634 830925 ■ wardsofkent.co.uk

- Legal advice should be taken to verify fixtures/fittings, planning, alterations and/or lease details
- Our Homewise partnership offer a 'Home for Life' plan to buyers over 60, granting a lifetime lease for your protection and reducing the purchase price by up to 59%

- Appliances & services are untested, dimensions are approximate and floor plans are not to scale



11520416/20220917/DG/JP