



**Offers In
Excess Of
£270,000
Freehold**

3x  1x  1x 

**Copperfield Road,
Rochester, Kent, ME1**

Wards
Helping you move forwards



Main features

- Perfect for first time buyers looking to get on the property ladder
- Upstairs bathroom
- Large rear garden ideal for families with children
- Off-road parking
- Close to good schools, high speed station and motorway links

Accommodation

GROUND FLOOR

Hallway

Lounge/Diner: 17'10 into bay x 13'0 at widest point (5.44m x 3.97m)

Kitchen: 10'5 x 7'10 (3.18m x 2.39m)

FIRST FLOOR

Landing

Bedroom 1: 11'4 x 9'9 (3.46m x 2.97m)

Bedroom 2: 11'5 x 7'11 (3.48m x 2.41m)

Bedroom 3: 7'7 x 7'3 (2.31m x 2.21m)

Bathroom: 7'3 x 4'10 (2.21m x 1.47m)

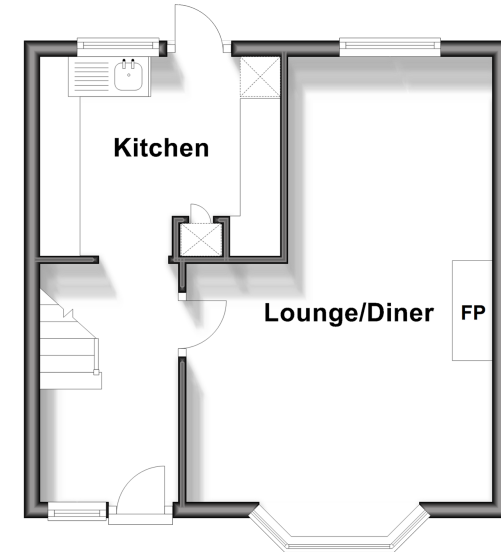
OUTSIDE

Off-Road Parking

Rear Garden

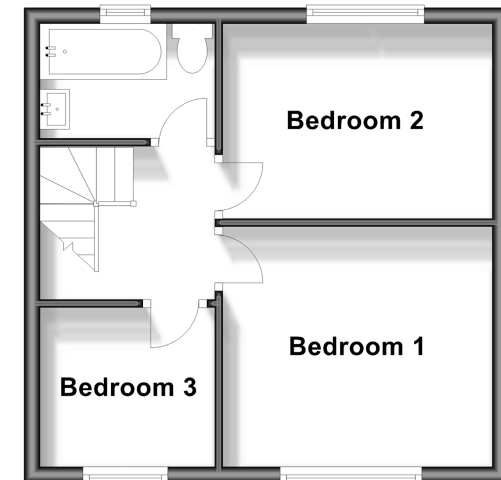
Ground Floor

Approx. 31.7 sq. metres (341.2 sq. feet)



First Floor

Approx. 31.3 sq. metres (336.7 sq. feet)



Call Rochester - 01634 830925 ■ wardsokent.co.uk

- Legal advice should be taken to verify fixtures/fittings, planning, alterations and/or lease details
- Appliances & services are untested, dimensions are approximate and floor plans are not to scale



11520537/20240507/DG/AB