



OVER 60?

Secure this property
for up to **59% less!**

Price

£350,000

Freehold

3x  1x  1x 

**Beresford Avenue,
Rochester, Kent, ME1**

Wards
Helping you move forwards



Main features

- Perfect for first time buyers looking to get on the property ladder
- Large kitchen/diner ideal for entertaining
- Off-road parking
- Walking distance to historic High Street and high speed station
- Offered with no forward chain

Accommodation

GROUND FLOOR

Hallway
Lounge: 16'1 x 11'0 (4.91m x 3.36m)
Kitchen/Diner: 17'3 x 10'11 (5.26m x 3.33m)

FIRST FLOOR

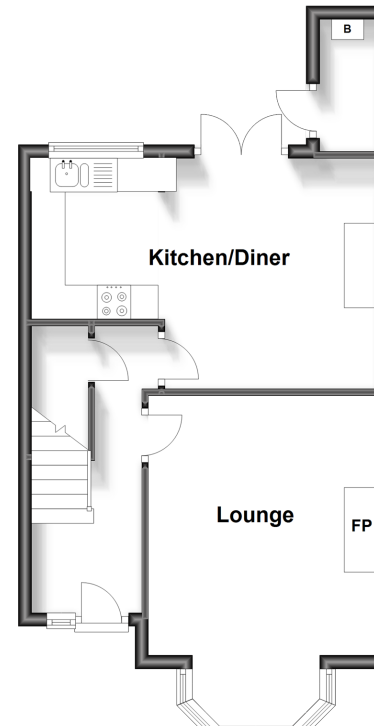
Landing
Bedroom 1: 16'10 x 10'5 (5.13m x 3.18m)
Bedroom 2: 10'11 x 10'6 (3.33m x 3.20m)
Bedroom 3: 7'0 x 6'0 (2.14m x 1.83m)
Bathroom: 6'2 x 6'0 (1.88m x 1.83m)

OUTSIDE

Rear Garden
Off-road Parking

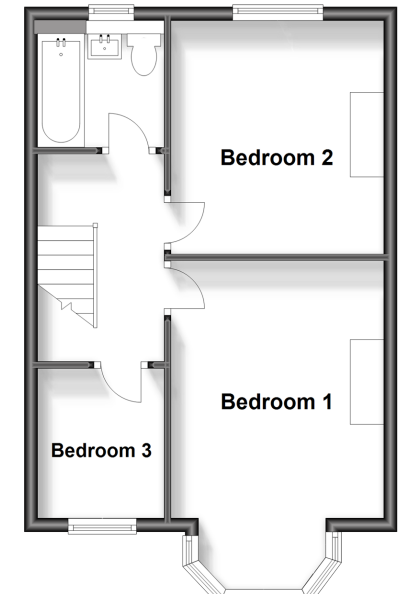
Ground Floor

Approx. 38.6 sq. metres (416.0 sq. feet)



First Floor

Approx. 39.7 sq. metres (427.7 sq. feet)



Call Rochester - 01634 830925 ■ wardsofkent.co.uk

■ Legal advice should be taken to verify fixtures/fittings, planning, alterations and/or lease details
■ Through a Homewise Home For Life Plan people aged 60+ can secure this property for up to 59% less, by purchasing a Lifetime Lease.

■ Appliances & services are untested, dimensions are approximate and floor plans are not to scale



11522954/20230720/DG/AB