



OVER 60?

Secure this property
for up to **59% less!**

Price
£315,000

Freehold

3x  1x  1x 

**Mooring Road,
Rochester, Kent, ME1**

Wards
Helping you move forwards



Main features

- Perfect for buyers looking to create their dream home!
- Open plan kitchen/diner perfect for entertaining
- Large rear garden
- Close to great schools and motorway links
- Sold with no forward chain

Accommodation

GROUND FLOOR

Hallway
Lounge: 12'4 x 12'3 (3.76m x 3.74m)
Kitchen/Diner: 19'4 x 9'3 (5.90m x 2.82m)
Utility Area
Toilet
Storage

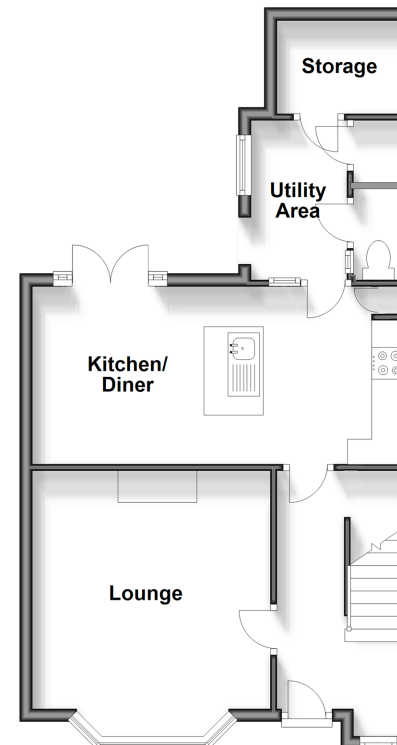
FIRST FLOOR

Landing
Bedroom 1: 12'6 x 9'4 (3.81m x 2.85m)
Bedroom 2: 14'4 x 12'6 (4.37m x 3.81m)
Bedroom 3: 9'0 x 7'8 (2.75m x 2.34m)
Bathroom: 6'5 x 5'6 (1.96m x 1.68m)

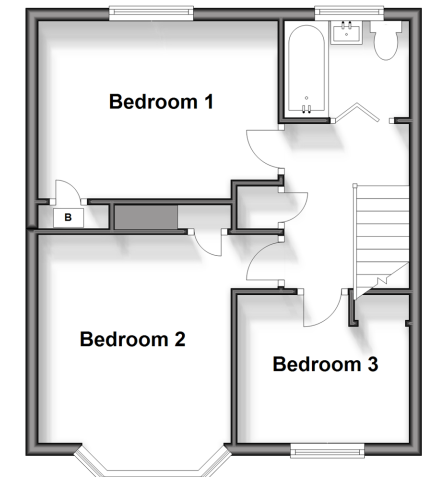
OUTSIDE

Front and Rear Garden

Ground Floor
Approx. 49.4 sq. metres (531.3 sq. feet)



First Floor
Approx. 39.5 sq. metres (425.5 sq. feet)



Call Rochester - 01634 830925 ■ wardsofkent.co.uk

■ Legal advice should be taken to verify fixtures/fittings, planning, alterations and/or lease details
■ Through a Homewise Home For Life Plan people aged 60+ can secure this property for up to 59% less, by purchasing a Lifetime Lease.

■ Appliances & services are untested, dimensions are approximate and floor plans are not to scale