



Price
£300,000

Freehold

2x  1x  1x 

**Brenchley Close,
Rochester, Kent, ME1**

OVER 60?

Secure this property
for up to **59% less!**

Wards
Helping you move forwards



Main features

- Sought after location
- Ideal first time buy for anyone looking to get onto the property ladder
- Kitchen/Diner
- Car- port and off-road parking
- Walking distance to historic High Street and high speed station

Accommodation

GROUND FLOOR

Lounge: 14'9 x 12'1 (4.50m x 3.69m)

Kitchen/Diner: 12'2 x 11'10 (3.71m x 3.61m)

FIRST FLOOR

Landing

Bedroom 1: 10'2 x 9'10 (3.10m x 3.00m)

Bedroom 2: 11'10 x 8'7 (3.61m x 2.62m)

Bathroom: 9'5 x 4'5 (2.87m x 1.35m)

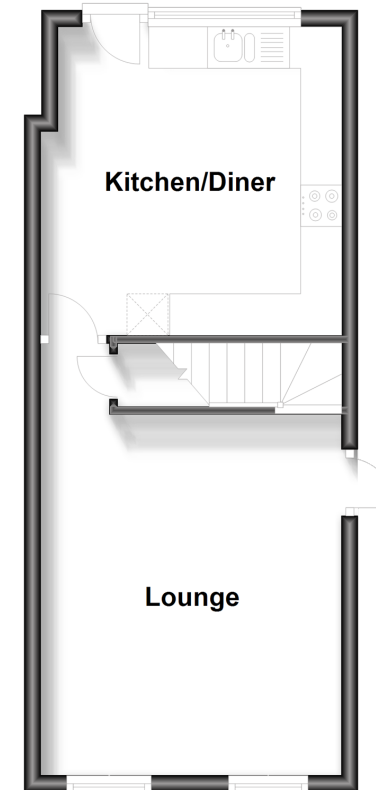
OUTSIDE

Front and Rear Garden

Car-port and Off-road Parking

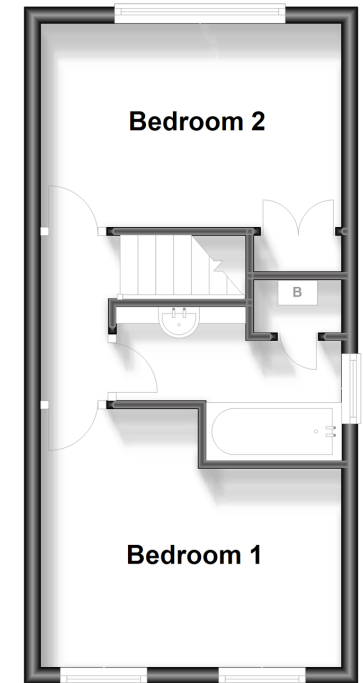
Ground Floor

Approx. 30.6 sq. metres (329.0 sq. feet)



First Floor

Approx. 28.5 sq. metres (306.9 sq. feet)



Call Rochester - 01634 830925 ■ wardsofkent.co.uk

- Legal advice should be taken to verify fixtures/fittings, planning, alterations and/or lease details
- Appliances & services are untested, dimensions are approximate and floor plans are not to scale
- Through a Homewise Home For Life Plan people aged 60+ can secure this property for up to 59% less, by purchasing a Lifetime Lease.



11524122/20230727/DG/DM