



Price

£400,000

Freehold

4x  1x  1x 

**Barnwood Close,
Rochester, Kent, ME1**

OVER 60?

Secure this property
for up to **59% less!**

Wards
Helping you move forwards



Main features

- Immaculately presented!
- Quiet cul-de-sac position
- Catchment area for top performing schools
- Upstairs bathroom and downstairs cloakroom
- Garage and off-road parking

Accommodation

GROUND FLOOR

Porch
Hallway
Cloakroom: 6'3 x 3'3 (1.91m x 0.99m)
Lounge: 17'8 x 9'1 (5.39m x 2.77m)
Kitchen / Diner: 16'3 x 11'2 (4.96m x 3.41m)

FIRST FLOOR

Landing
Bedroom 1: 11'2 x 9'6 (3.41m x 2.90m)
Bedroom 2: 11'2 x 9'7 (3.41m x 2.92m)
Bedroom 3: 11'2 x 6'8 (3.41m x 2.03m)
Bedroom 4: 6'7 x 6'7 (2.01m x 2.01m)
Bathroom : 6'8 x 6'7 (2.03m x 2.01m)

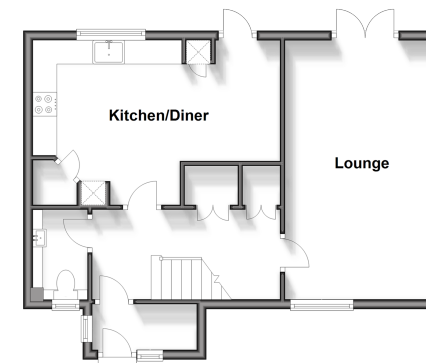
OUTBUILDING

Garage

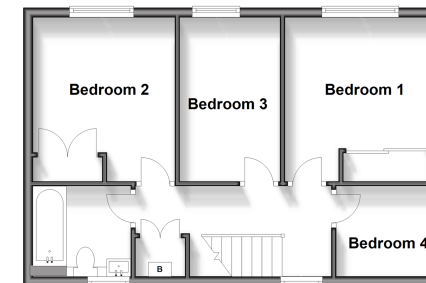
OUTSIDE

Front and Rear Garden
Off-Road Parking

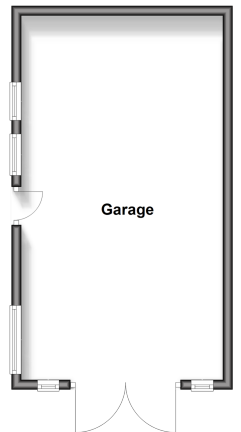
Ground Floor
Approx. 47.6 sq. metres (512.5 sq. feet)



First Floor
Approx. 45.3 sq. metres (487.7 sq. feet)



Outbuilding
Approx. 32.2 sq. metres (346.3 sq. feet)



Call Rochester - 01634 830925 ■ wardsofkent.co.uk

■ Legal advice should be taken to verify fixtures/fittings, planning, alterations and/or lease details
■ Through a Homewise Home For Life Plan people aged 60+ can secure this property for up to 59% less, by purchasing a Lifetime Lease.

■ Appliances & services are untested, dimensions are approximate and floor plans are not to scale



11526538/20240325/DG/AB