



OVER 60?

Secure this property
for up to **59% less!**

Price

£587,995

Freehold

4x  1x  2x 

**High Street, Wouldham,
Rochester, Kent, ME1**

Wards
Helping you move forwards



Main features

- Picturesque village location
- Immaculately presented with a stunning contemporary kitchen
- Spacious living rooms and double bedrooms
- Garage and off-road parking
- Easy access to motorway links M2/M20/A2

Accommodation

GROUND FLOOR

Hallway

Cloakroom

Lounge: 23'0 x 12'10 (7.02m x 3.91m)

Kitchen: 9'11 x 7'6 (3.02m x 2.29m)

Dining Area: 11'6 x 11'4 (3.51m x 3.46m)

Lean To: 11'6 x 2'0 (3.51m x 0.61m)

FIRST FLOOR

Landing

Bedroom 1: 14'3 x 10'6 (4.35m x 3.20m)

Bedroom 2: 13'0 x 8'11 (3.97m x 2.72m)

Bedroom 3: 11'9 x 9'11 (3.58m x 3.02m)

Bedroom 4: 8'11 x 8'5 (2.72m x 2.57m)

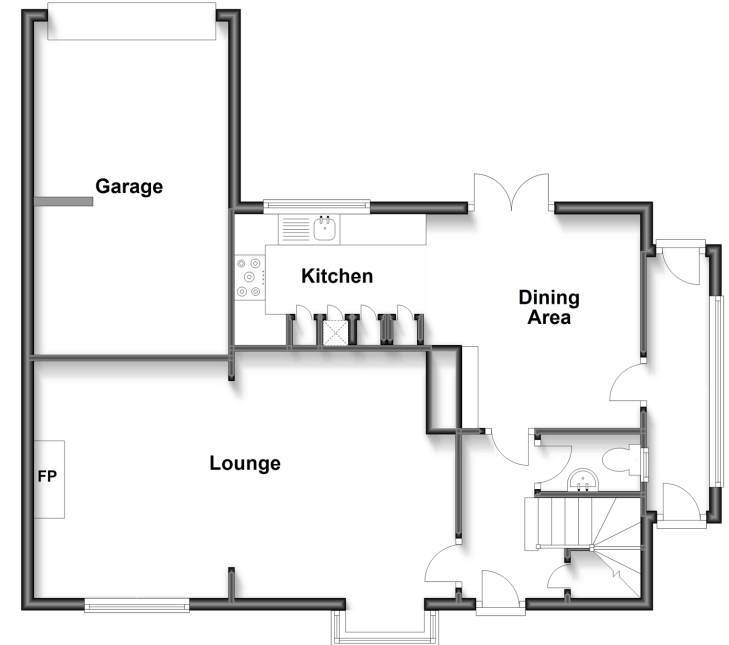
Bathroom

OUTSIDE

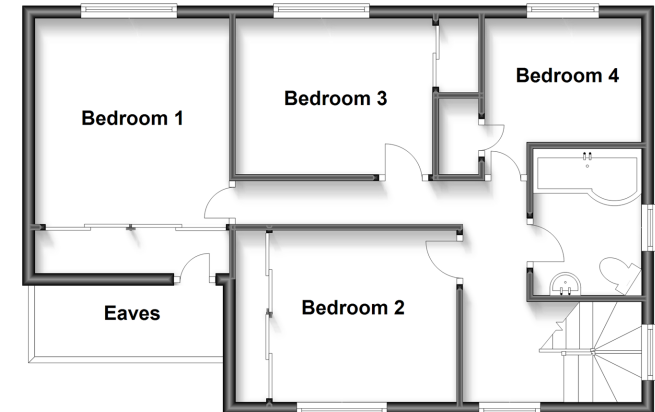
Front and Rear Garden

Garage and Driveway

Ground Floor
Approx. 75.8 sq. metres (815.5 sq. feet)



First Floor
Approx. 54.3 sq. metres (584.1 sq. feet)



Call Rochester - 01634 830925 ■ wardsofkent.co.uk

- Legal advice should be taken to verify fixtures/fittings, planning, alterations and/or lease details
- Appliances & services are untested, dimensions are approximate and floor plans are not to scale
- Through a Homewise Home For Life Plan people aged 60+ can secure this property for up to 59% less, by purchasing a Lifetime Lease.



11526769/20230313/DG/JP