



**Price**

**£375,000**

**Freehold**

3x  1x  2x 

**Brambletree Crescent,  
Rochester, Kent, ME1**

**OVER 60?**

Secure this property  
for up to **59% less!**



**Video Tour available**

**Wards**  
Helping you move forwards





## Main features

- Perfect family home
- Beautiful rear garden
- Generous living accommodation and bedroom sizes
- Garage and off-road parking
- Walking distance to top performing schools and riverside walks

## Accommodation

### GROUND FLOOR

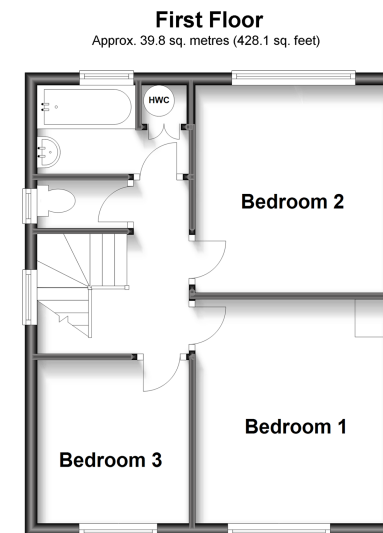
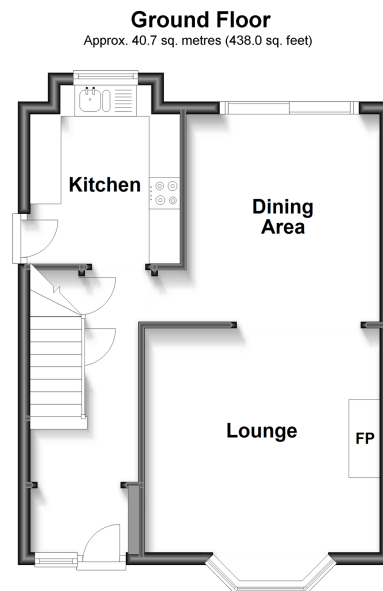
Entrance Hallway  
 Lounge: 13'7 x 11'3 (4.14m x 3.43m)  
 Dining Area: 12'2 x 9'3 (3.71m x 2.82m)  
 Kitchen: 9'1 x 7'9 (2.77m x 2.36m)

### FIRST FLOOR

Landing  
 Separate Toilet: 5'1 x 2'4 (1.55m x 0.71m)  
 Bathroom: 8'3 x 5'6 (2.52m x 1.68m)  
 Bedroom 1: 11'9 x 10'4 (3.58m x 3.15m)  
 Bedroom 2: 11'0 x 10'2 (3.36m x 3.10m)  
 Bedroom 3: 8'9 x 8'3 (2.67m x 2.52m)

### OUTSIDE

Front and rear Garden  
 Garage and Off-road Parking



**Call Rochester - 01634 830925 ■ wardsofkent.co.uk**

■ Legal advice should be taken to verify fixtures/fittings, planning, alterations and/or lease details  
 ■ Through a Homewise Home For Life Plan people aged 60+ can secure this property for up to 59% less, by purchasing a Lifetime Lease.

■ Appliances & services are untested, dimensions are approximate and floor plans are not to scale



11527121/20230227/DG/ME