



**Guide Price**  
**£750,000**

**Freehold**

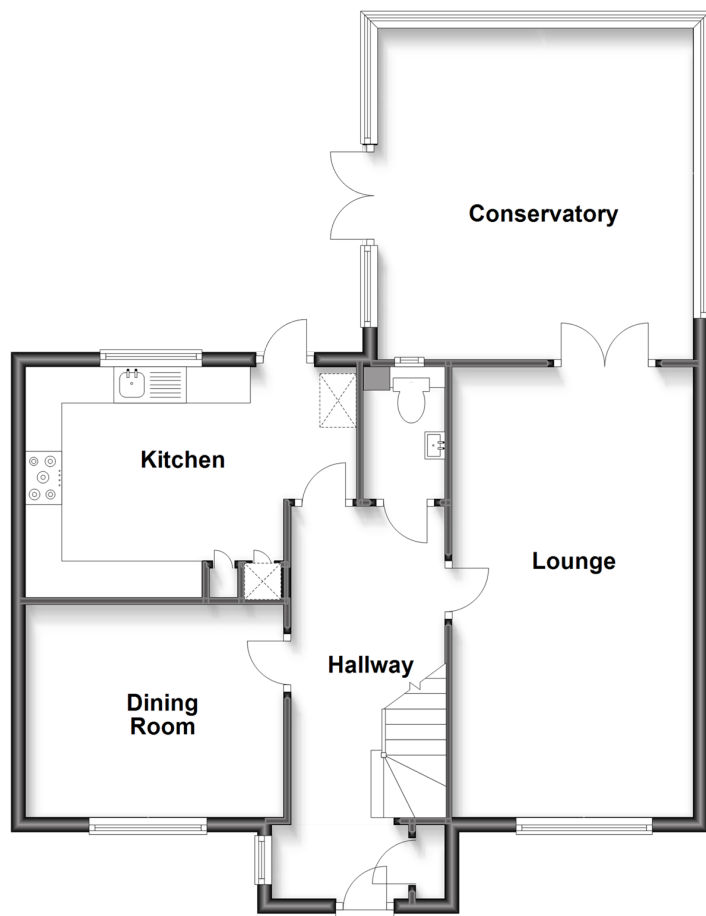
5x  3x  2x 

**Oldfield Drive,  
Wouldham, Rochester,  
Kent, ME1**

*Wards*  
Helping you move forwards

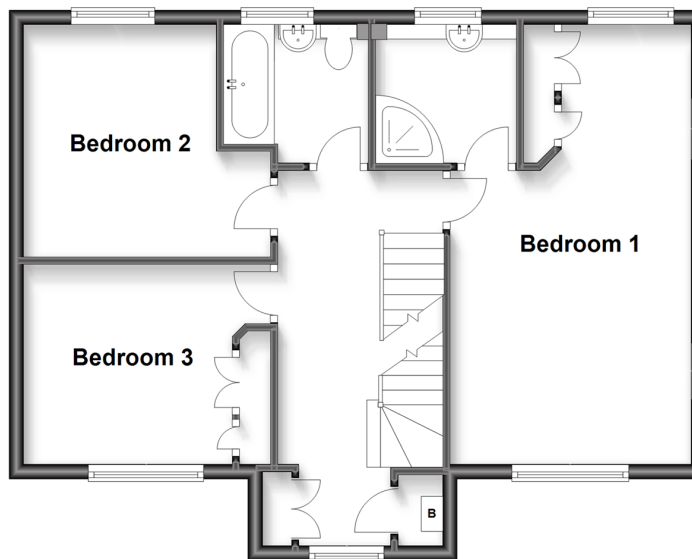
## Ground Floor

Approx. 79.9 sq. metres (860.5 sq. feet)



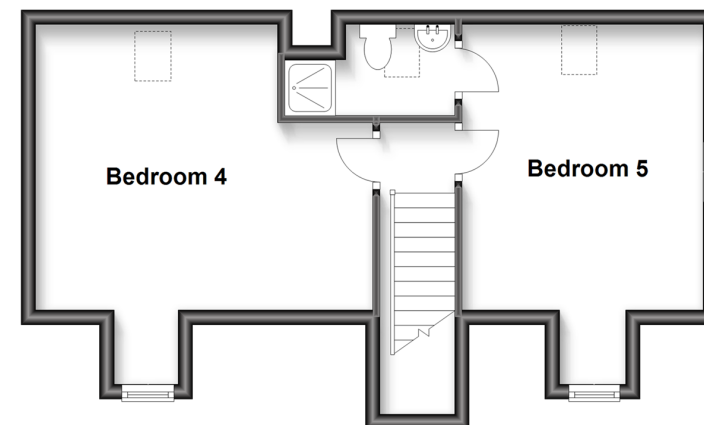
## First Floor

Approx. 58.4 sq. metres (629.1 sq. feet)



## Second Floor

Approx. 39.0 sq. metres (419.9 sq. feet)



## Accommodation

### GROUND FLOOR

Hallway  
Cloakroom  
Lounge: 20'4 x 10'10 (6.20m x 3.30m)  
Dining room: 11'6 x 9'10 (3.51m x 3.00m)  
Kitchen: 14'8 x 10'3 (4.47m x 3.13m)  
Conservatory: 14'9 x 14'3 (4.50m x 4.35m)

### FIRST FLOOR

Landing  
Bedroom 1: 20'8 x 10'10 (6.30m x 3.30m)  
En-suite Shower Room  
Bedroom 2: 11'6 x 9'10 (3.51m x 3.00m)  
Bedroom 3: 10'6 x 9'7 (3.20m x 2.92m)  
Bathroom

### SECOND FLOOR

Landing  
Bedroom 4: 15'11 x 13'11 (4.85m x 4.24m)  
Bedroom 5: 13'11 x 10'10 (4.24m x 3.30m)  
En-suite Shower Room

### OUTSIDE

Front and Rear Garden  
Double Garage: 18'0 x 14'7 (5.49m x 4.45m)  
Off-road Parking





## Main features

- Located in the picturesque hamlet of historic Rochester
- 5 Double bedrooms with 2 en-suites
- Catchment area for high performing primary and secondary schools
- Double garage with ample parking
- Direct high speed train links to London



## Nearest Schools

Primary Schools: All Saints C of E Voluntary Controlled Primary 0.8 miles

Secondary Schools: St John Fisher Catholic 4.5 miles, Sir Joseph Williamson's Mathematical 3.5 miles

## Transport Information

Train Stations: Rochester 4.2 miles, Chatham 4.8 miles, Aylesford 6 miles

## Address

Oldfield Drive, Wouldham, Rochester, Kent, ME1

## Directions

For directions to this property please contact us.







Call Rochester Branch 01634 830925 ■ [wardsofkent.co.uk](http://wardsofkent.co.uk)



■ Legal advice should be taken to verify fixtures/fittings, planning, alterations and/or lease details ■ Appliances & services are untested, dimensions are approximate and floor plans are not to scale



11528168/20230413/DG/JP