



Price
£260,000

Freehold

3x  1x  1x 

**Cecil Road, Rochester,
Kent, ME1**

Wards
Helping you move forwards



Main features

- Ideal first time buy or investment!
- Contemporary decoration throughout
- Primary and secondary schools nearby
- Close to historic High Street with high speed station
- Offered with no forward chain

Accommodation

SPLIT LEVEL GROUND FLOOR

Lounge: 12'5 x 12'4 (3.79m x 3.76m)

Dining Area: 12'8 x 12'4 (3.86m x 3.76m)

Kitchen: 9'10 x 7'6 (3.00m x 2.29m)

Bathroom

SPLIT LEVEL FIRST FLOOR

Landing

Bedroom 1: 12'5 x 12'4 (3.79m x 3.76m)

Bedroom 2: 12'8 x 8'3 (3.86m x 2.52m)

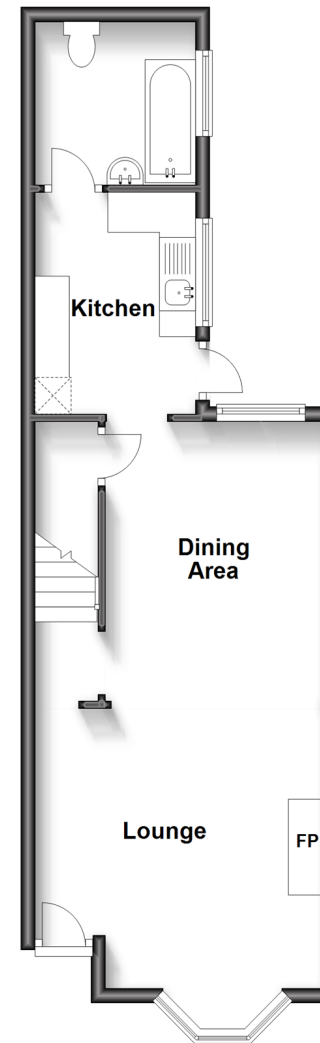
Bedroom 3: 10'5 x 7'4 (3.18m x 2.24m)

OUTSIDE

Rear Garden

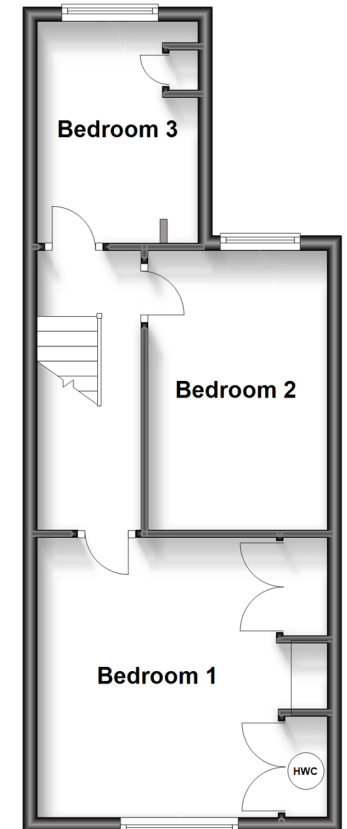
Split Level Ground Floor

Approx. 459.7 sq. feet



Split Level First Floor

Approx. 409.5 sq. feet



Call Rochester - 01634 830925 ■ wardsokent.co.uk

- Legal advice should be taken to verify fixtures/fittings, planning, alterations and/or lease details
- Appliances & services are untested, dimensions are approximate and floor plans are not to scale



11528787/20230715/DG/JP