



Price
£200,000

Leasehold

1x  1x  1x 

**Sarafand House, 84 St.
Margarets Street,
Rochester, Kent, ME1**

OVER 60?

Secure this property
for up to **59% less!**



Video Tour available

Wards
Helping you move forwards



Main features

- Ideal first time buy or investment
- Panoramic views over the River Medway
- Located in a prestigious location close to historic High Street with high speed train links
- Allocated parking
- Offered with no forward chain

Accommodation

FIRST FLOOR

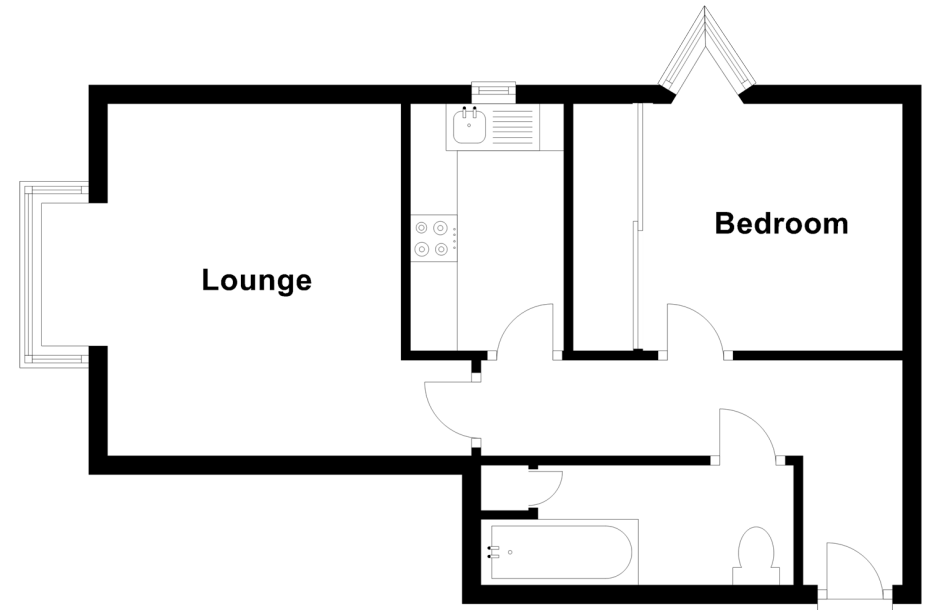
- Hallway
- Bedroom 1: 8'10 x 8'6 (2.69m x 2.59m)
- Bathroom
- Kitchen: 8'7 x 5'6 (2.62m x 1.68m)
- Lounge: 14'0 x 12'4 (4.27m x 3.76m)

OUTSIDE

- Allocated Parking

First Floor

Approx. 38.8 sq. metres (418.0 sq. feet)



Call Rochester - 01634 830925 ■ wardsofkent.co.uk

■ Legal advice should be taken to verify fixtures/fittings, planning, alterations and/or lease details
 ■ Through a Homewise Home For Life Plan people aged 60+ can secure this property for up to 59% less, by purchasing a Lifetime Lease.

■ Appliances & services are untested, dimensions are approximate and floor plans are not to scale