



Guide Price
£325,000

Leasehold

3x  2x  1x 

**Davy Court, Rochester,
Kent, ME1**

OVER 60?

You could get up to
59% off the price!*

Wards
Helping you move forwards



Main features

- Gated environment
- Deceptive spacious home with contemporary design throughout
- Walking distance to historic High Street with high speed station
- Close to restaurants, coffee shops and bars
- Allocated parking

Accommodation

SPLIT LEVEL GROUND FLOOR

Hallway

Lounge/Diner: (L-shaped) 14'1 x 9'2 (4.30m x 2.80m) plus 9'6 x 7'11 (2.90m x 2.41m)

Kitchen: 10'10 x 7'7 (3.30m x 2.31m)

Bedroom 1: 12'6 x 12'2 (3.81m x 3.71m)

En-suite Shower Room: 6'3 x 4'7 (1.91m x 1.40m)

Bedroom 2: 11'2 x 9'10 (3.41m x 3.00m)

Bedroom 3: 12'6 x 7'11 (3.81m x 2.41m)

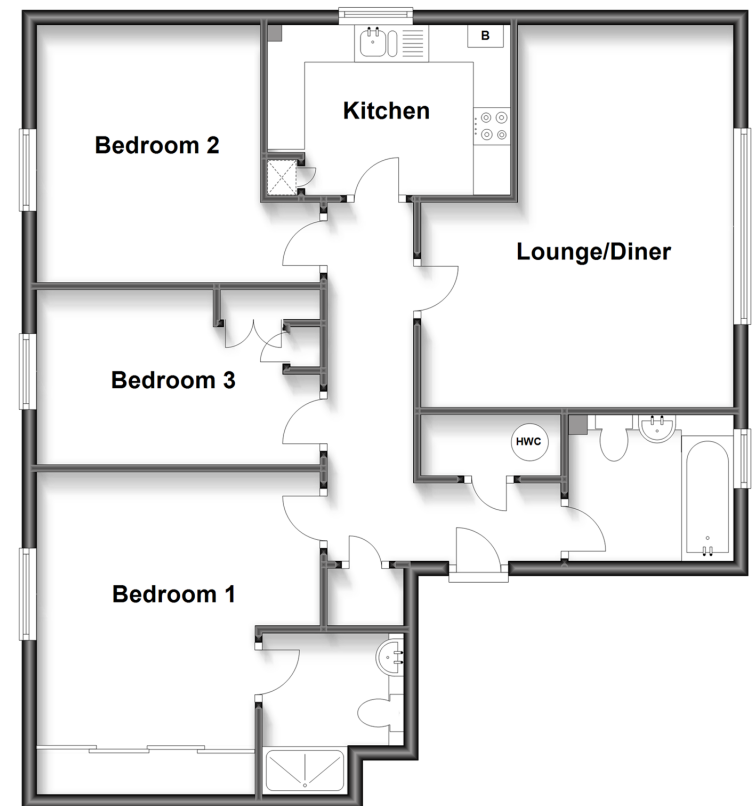
Bathroom: 7'3 x 6'7 (2.21m x 2.01m)

OUTSIDE

Allocated Parking

Split Level Ground Floor

Approx. 82.5 sq. metres (887.7 sq. feet)



Call Rochester - 01634 830925 ■ wardsofkent.co.uk

- Legal advice should be taken to verify fixtures/fittings, planning, alterations and/or lease details
- Appliances & services are untested, dimensions are approximate and floor plans are not to scale
- Our Homewise partnership offer a 'Home for Life' plan to buyers over 60, granting a lifetime lease for your protection and reducing the purchase price by up to 59%



11529271/20220921/DG/JP